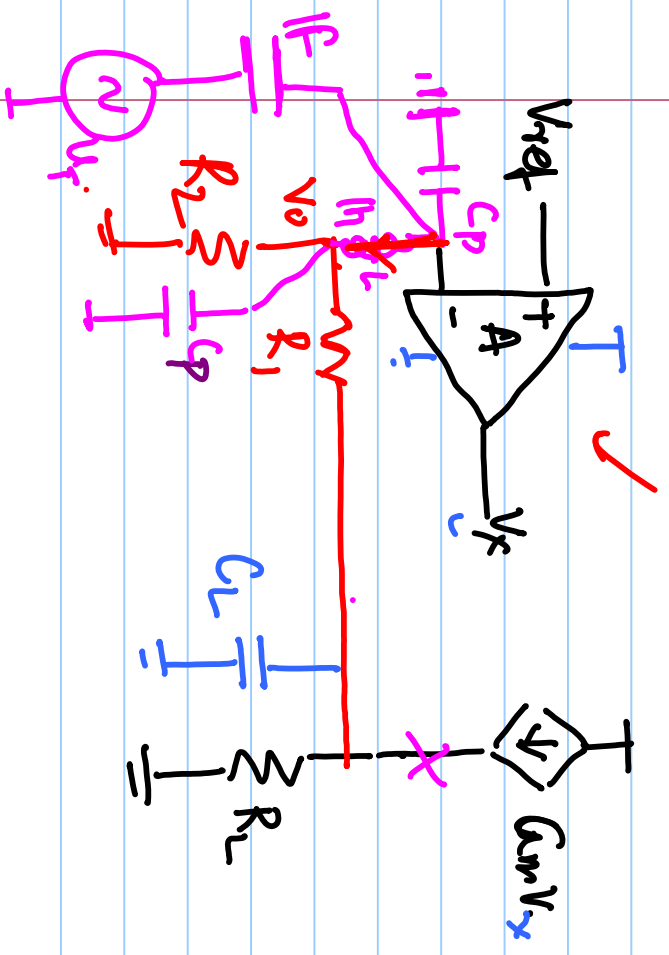
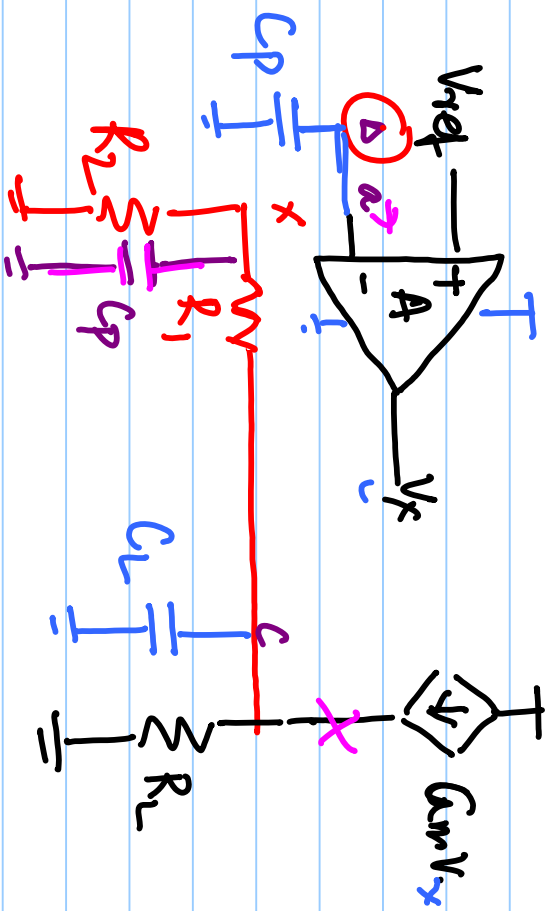
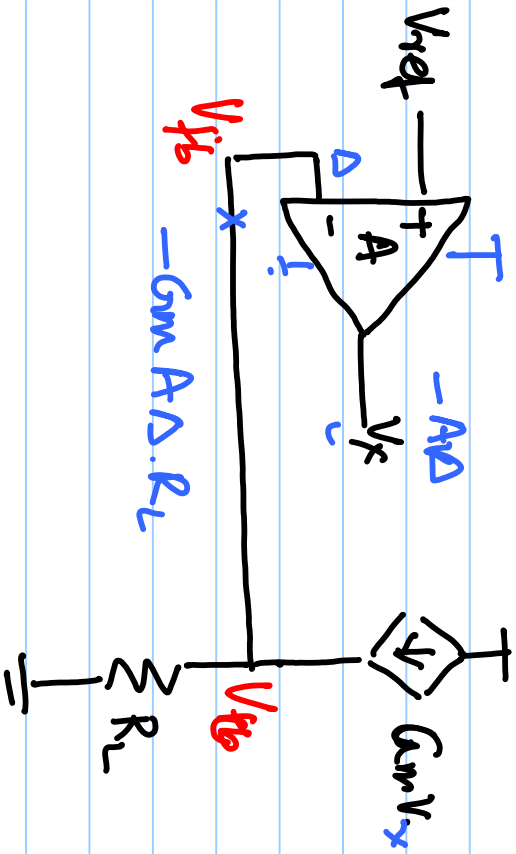


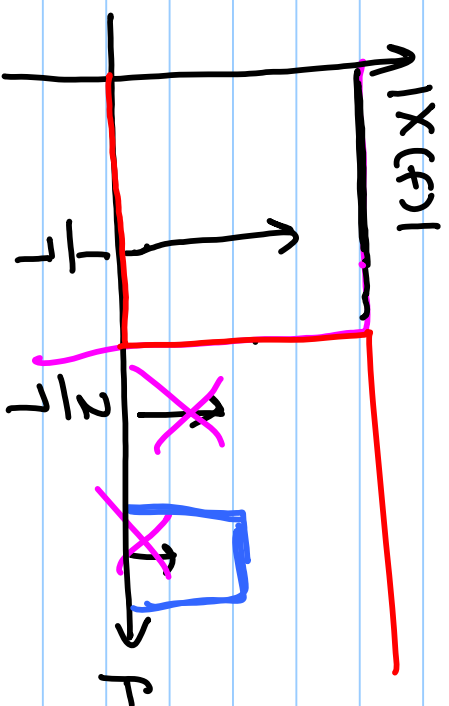
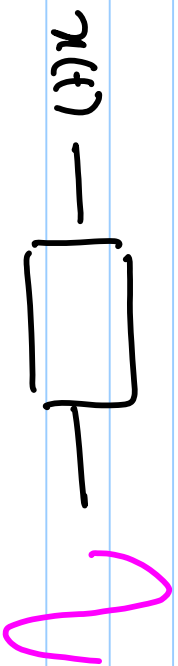
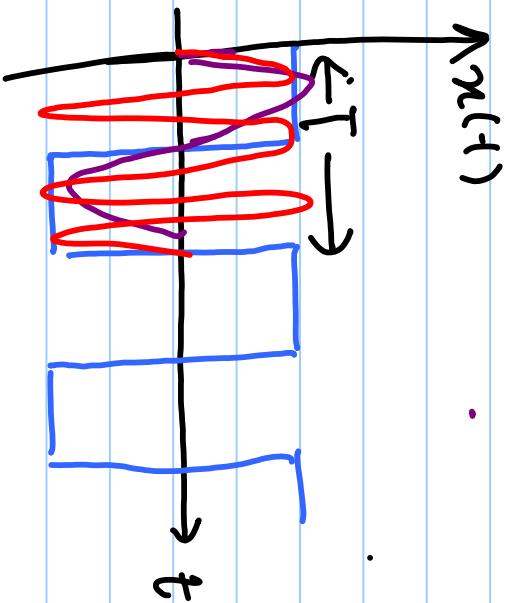
Lecture # 27



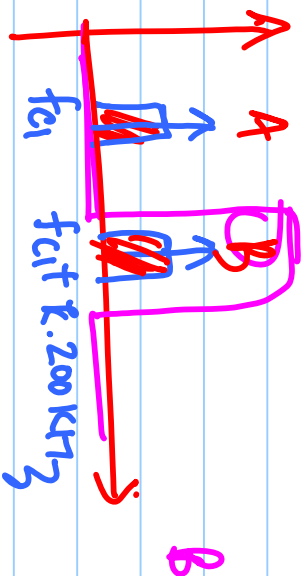
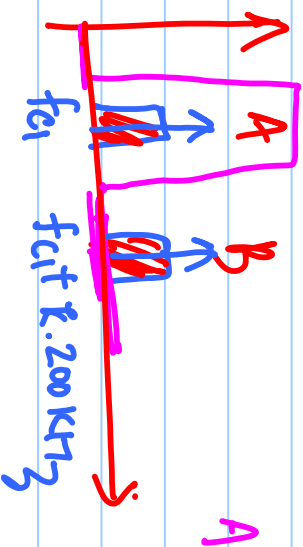
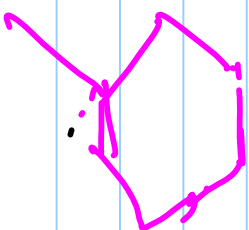
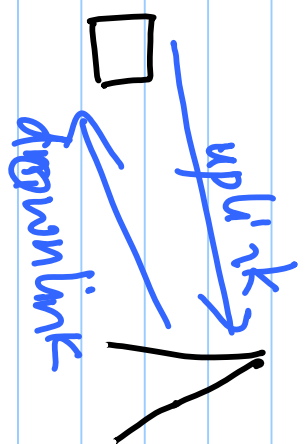
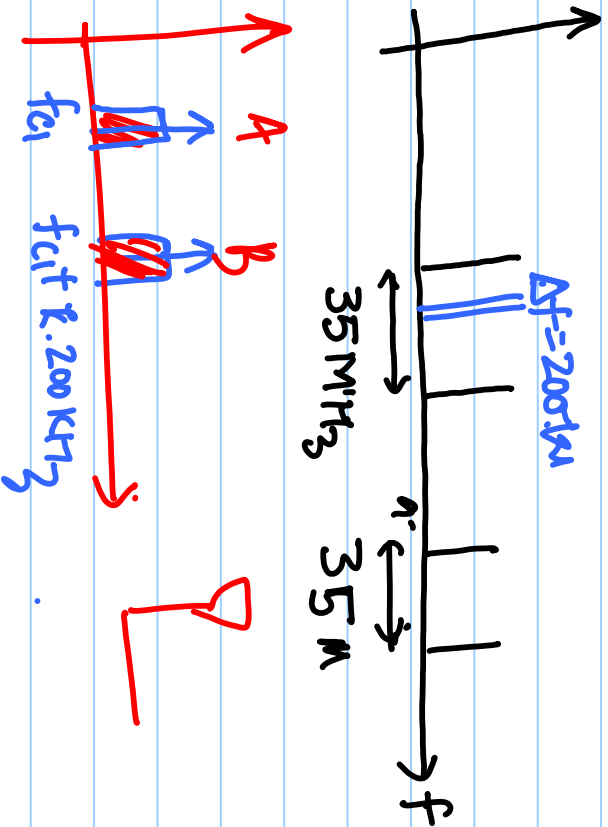
$$D.A \ a_m \left(R_L \parallel \frac{1}{sC_L} \parallel (R_1 + R_2) \right) \times \frac{R_2}{R_1 + R_2}$$

FT probe

Analog Filter

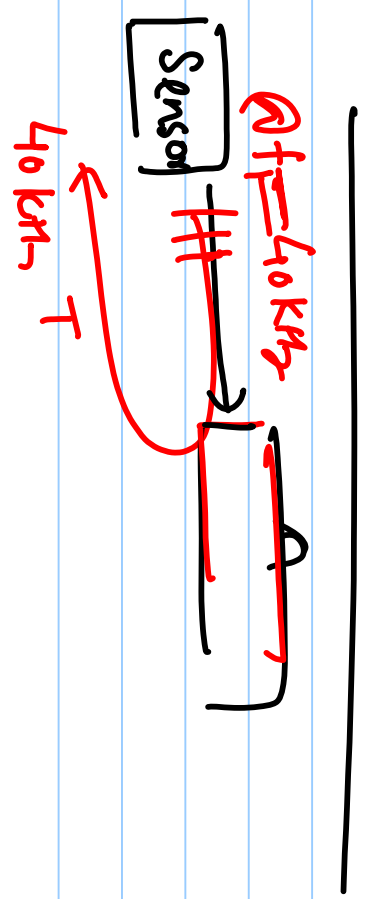


cellphone

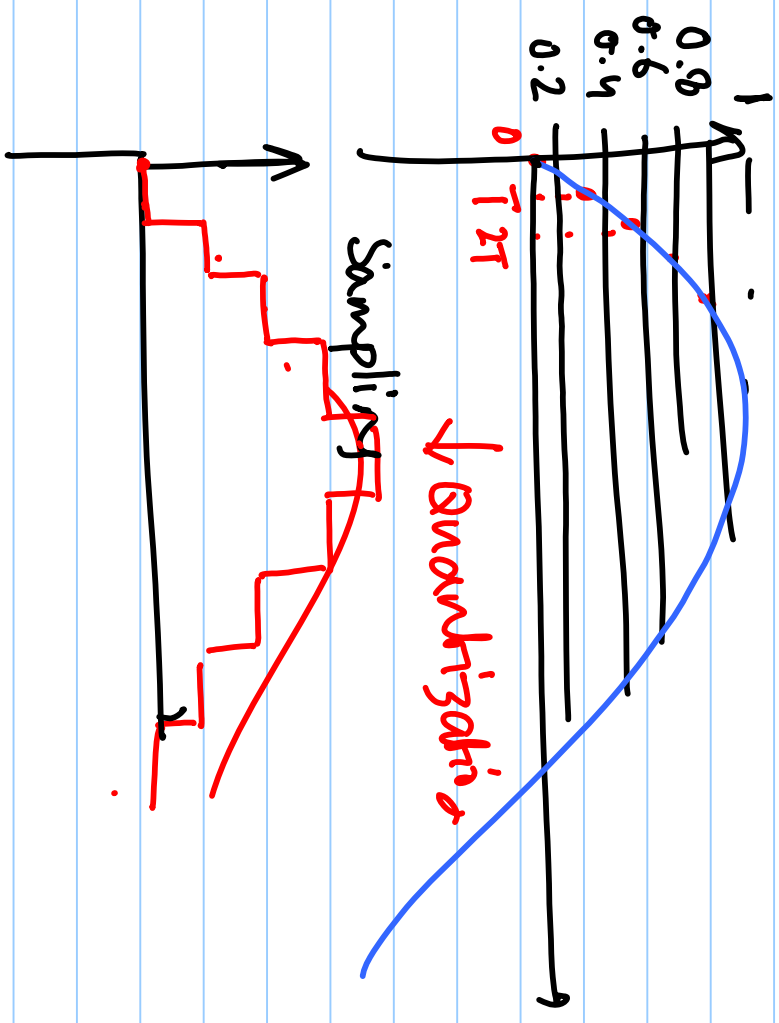
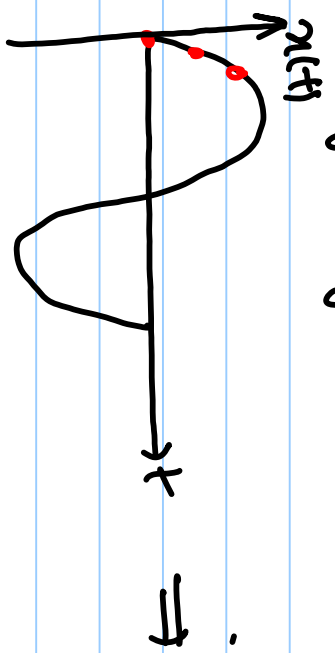


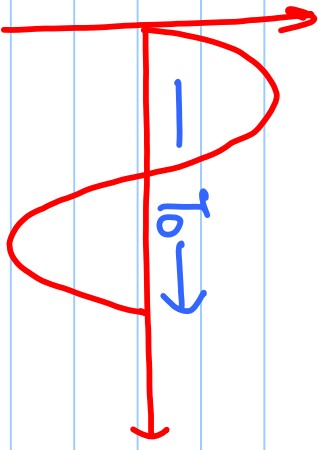
2. Radio

3 Sensor



4. Analog to Digital Converter





Samplings

