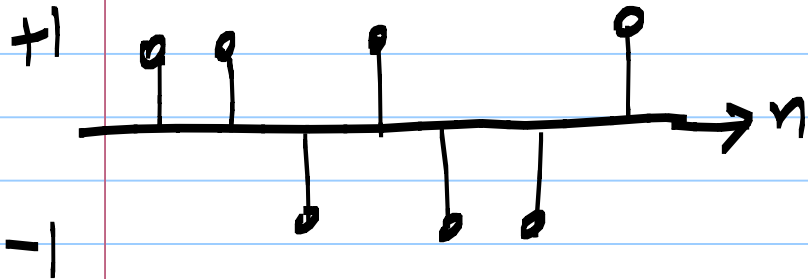


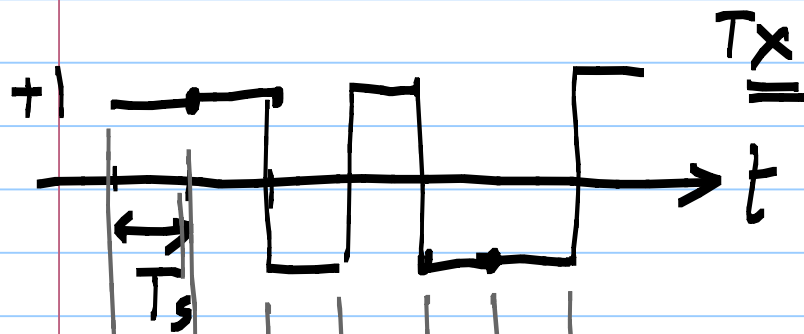
EE6322: VLSI Broadband communication circuits

Note Title

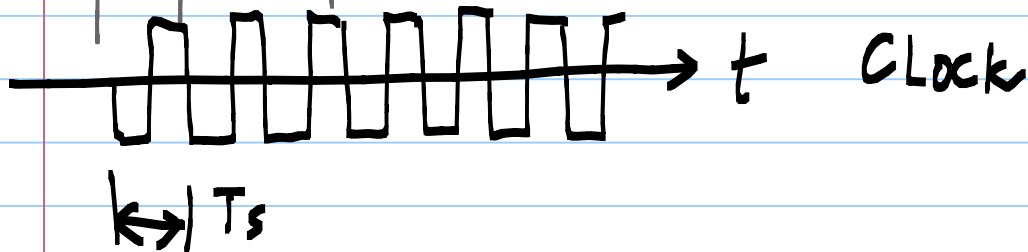
1/13/2020

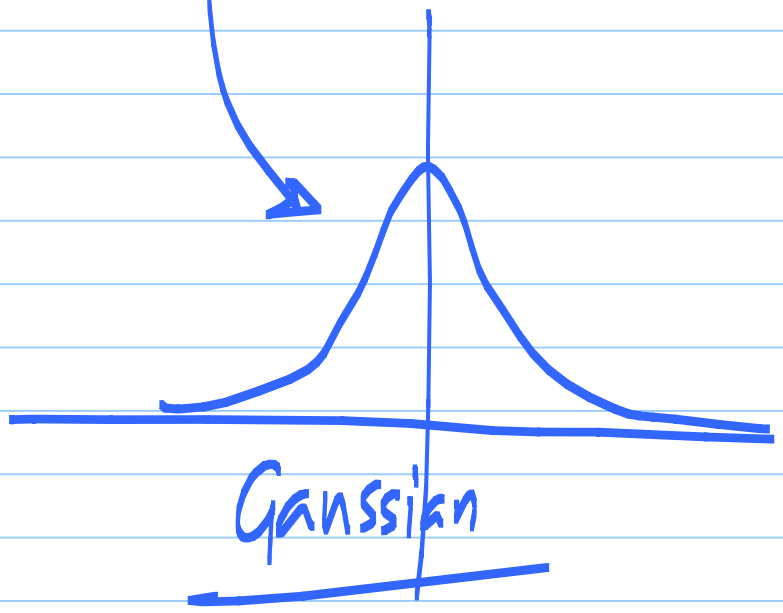
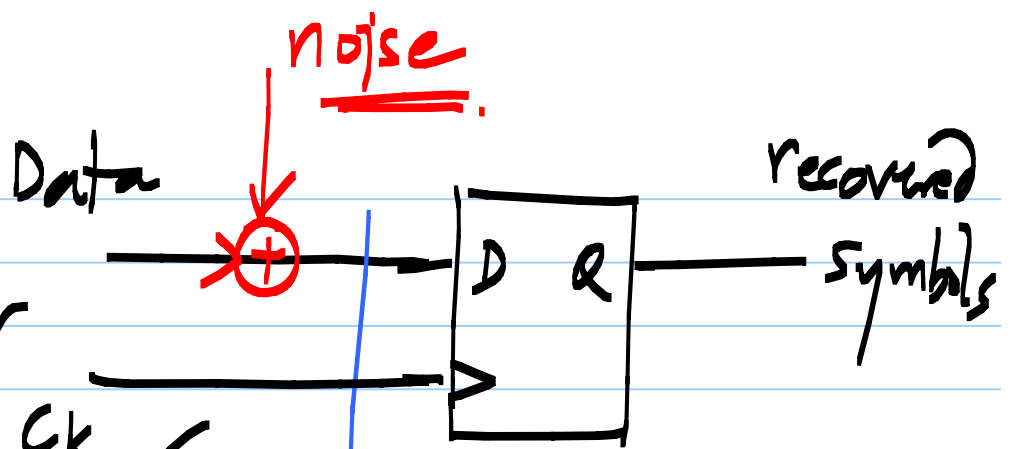
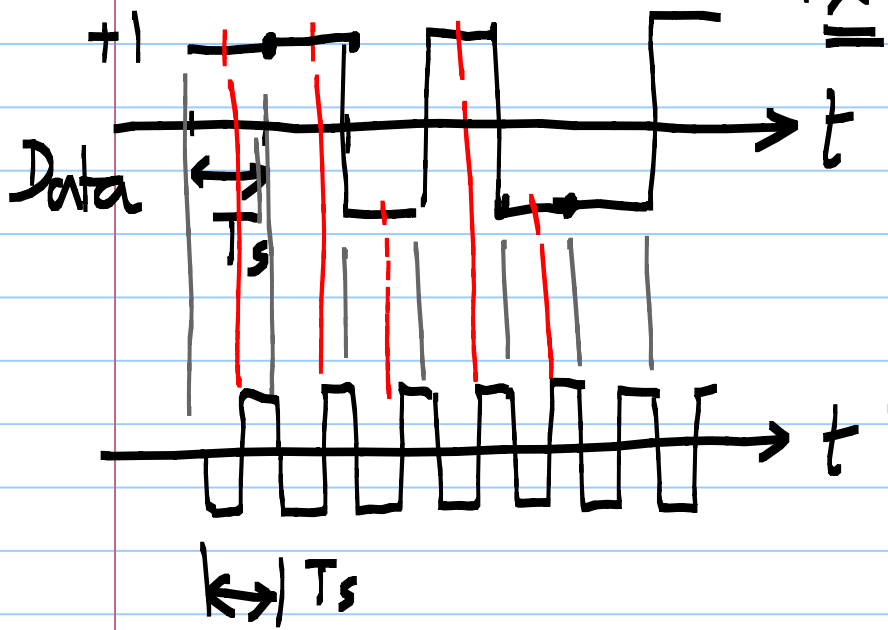
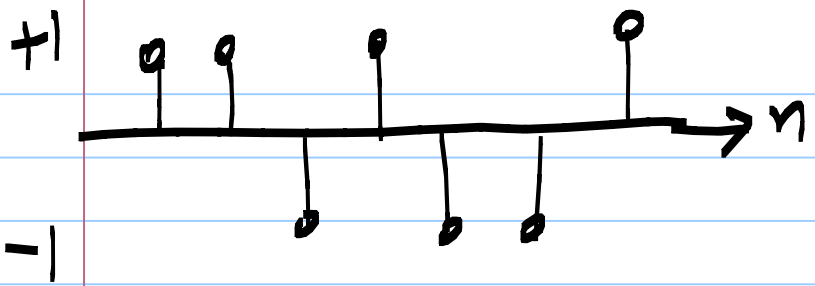


Symbol = 2 values, (1 bit)
 \therefore Bit rate = symbol rate



T_s : symbol interval
 $f_s = \frac{1}{T_s} = \text{symbol rate}$





Noise: random process:

- Individual outcomes cannot be predicted

- Statistics can be found

├── over an ensemble
└── over time

