

# EE5390 Analog Integrated Circuit Design

## Assignment 6

### Friday 18/04/2014

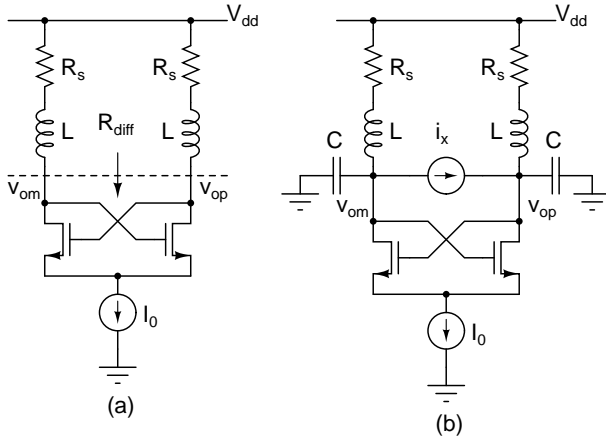


Figure 1:

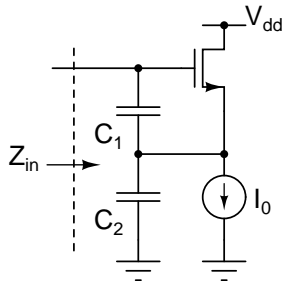


Figure 2:

1. Calculate the current flowing in each transistor in Fig. 1(a) in the quiescent condition. Calculate the small signal differential resistance  $R_{out}$  looking into the drains of the two transistors.

In Fig. 1(b), calculate  $(v_{op} - v_{om})/i_x$ . What is the condition for this to be infinity? What is the frequency at which this happens?

2. Calculate the input impedance  $Z_{in}$  in Fig. 2. Is there anything special about it? Model the transistor using only its  $g_m$ .

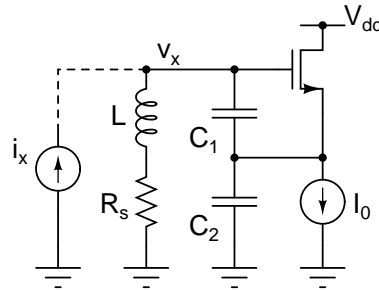


Figure 3:

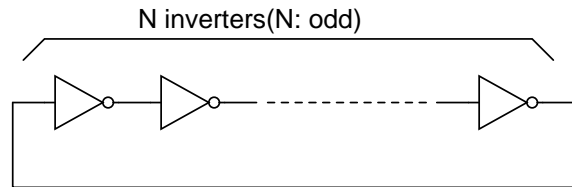


Figure 4:

3. Calculate the small signal impedance  $v_x/i_x$ . What is the condition for this to be infinity? What is the frequency at which this happens? Model the transistor using only its  $g_m$ .
4. In Fig. 4, assume that all nodes are at the self bias voltage of the inverter. Model the small signal gain of each inverter as  $A_0/(1 + s/p_1)$  and calculate the condition for instability (i.e. when the loop gain becomes  $-1$ ). Hint: Among the roots of  $-1$ , pick the one which satisfies the above for the lowest value of  $A_0$ .