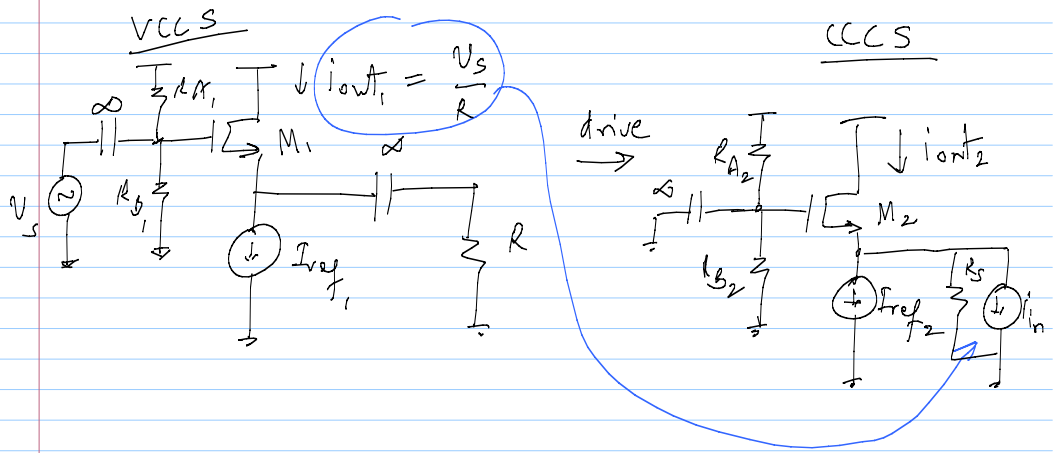
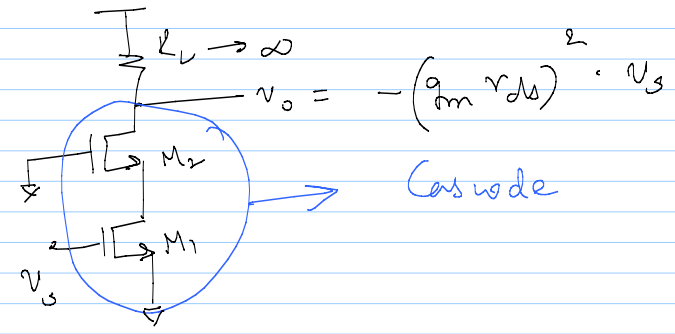
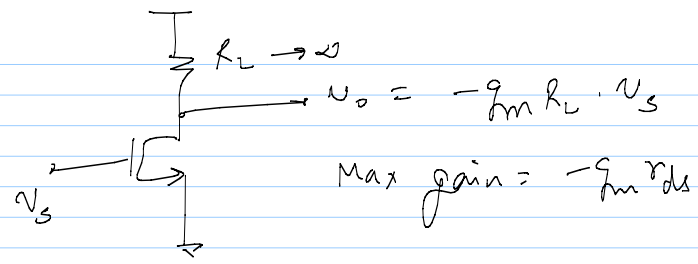
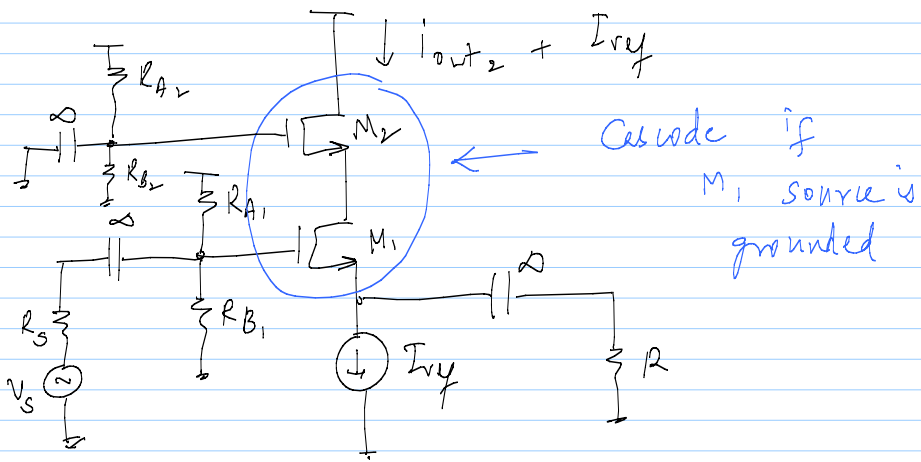
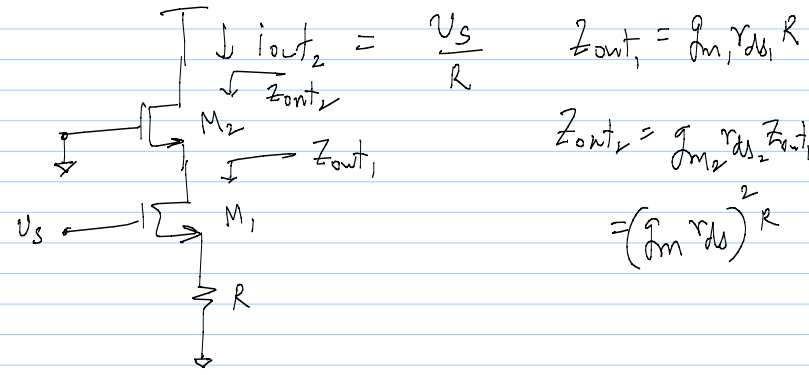


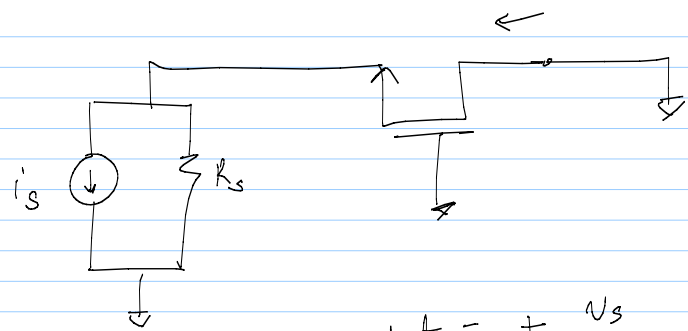
26/9/14

lec 27



Composite VCCS





$$i_{out} = + \frac{V_s}{R_s}$$

$$V_o/V_s = \frac{R_L}{R_s}$$

Incremental CCVS \equiv Transimpedance Amplifier

$$V_{out} = R i_{in} ; Z_{in} = 0 ; Z_{out} = 0$$

