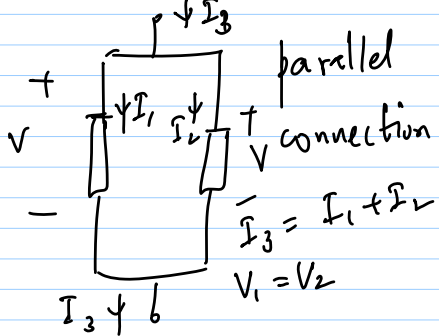
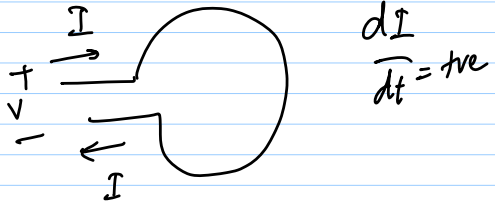
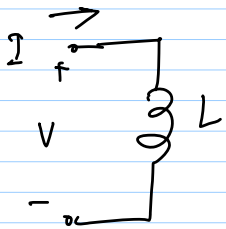
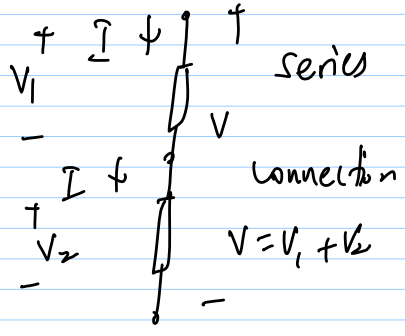


20/1/15

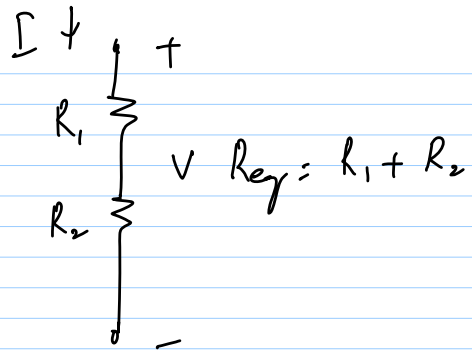
Lec 4



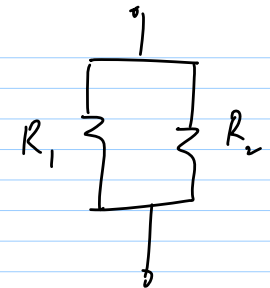
parallel connection



series connection

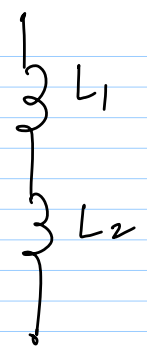


$R_{eq} = R_1 + R_2 + \dots$

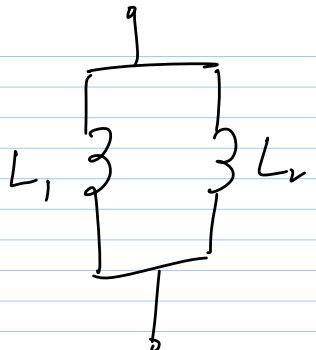


$\frac{1}{R_{eq}} = \frac{1}{R_1} + \frac{1}{R_2}$

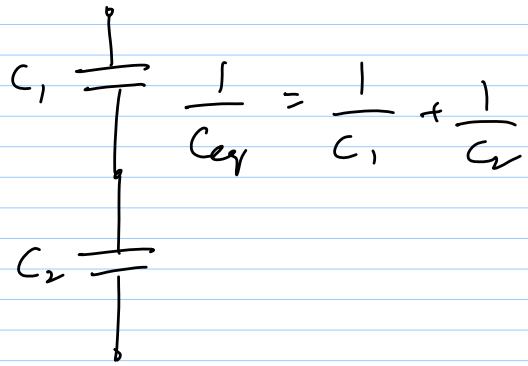
$G_{eq} = G_1 + G_2 + \dots$



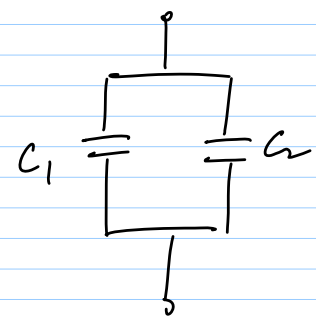
$L_{eq} = L_1 + L_2$



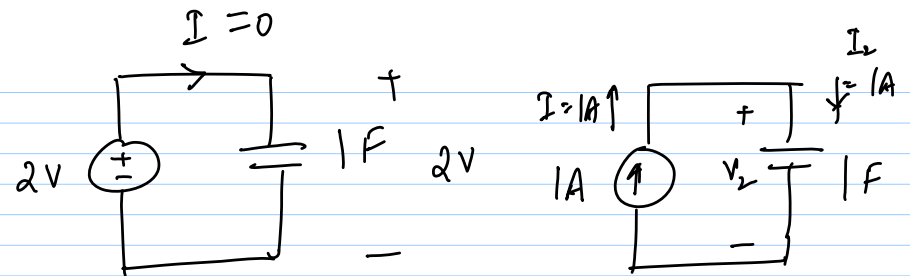
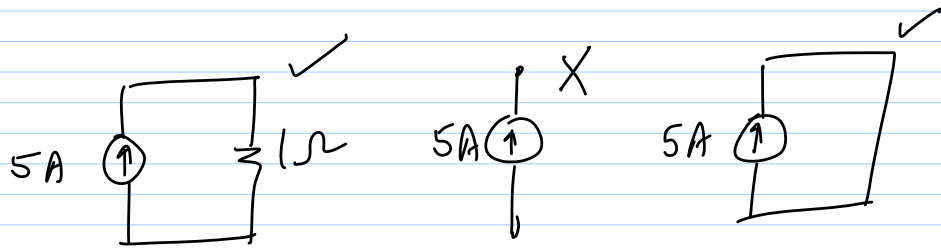
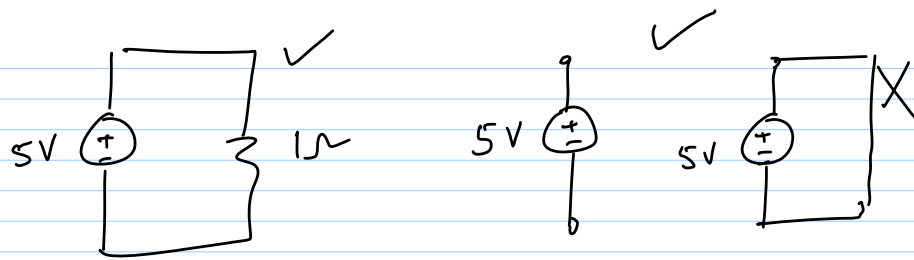
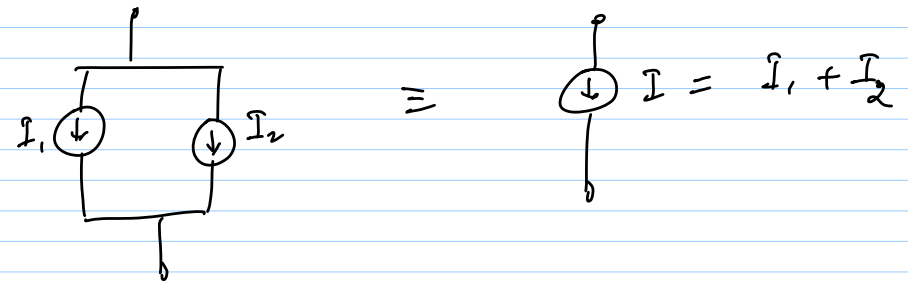
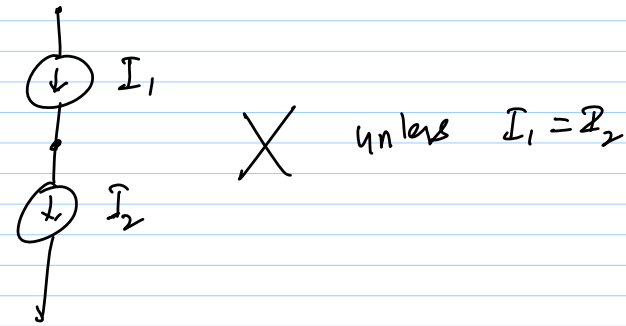
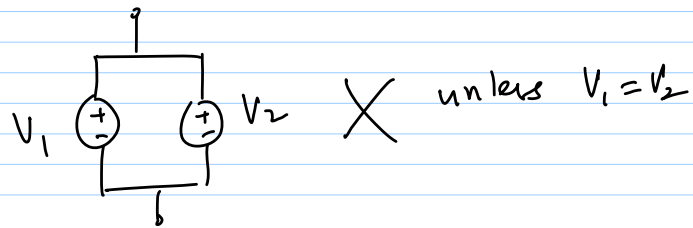
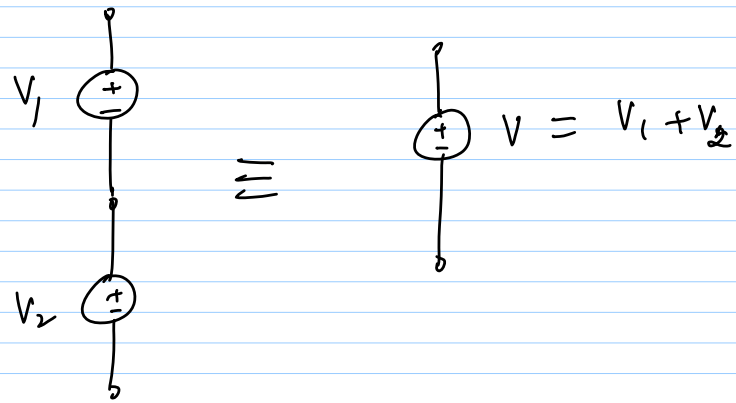
$\frac{1}{L_{eq}} = \frac{1}{L_1} + \frac{1}{L_2}$



$\frac{1}{C_{eq}} = \frac{1}{C_1} + \frac{1}{C_2}$



$C_{eq} = C_1 + C_2$



$$V_2 = ?$$

$$I_2 = C \frac{dV_2}{dt}$$

$$1A = 1F \cdot \frac{dV_2}{dt} \Rightarrow V_2 = t \text{ assuming cap is initially discharged}$$

