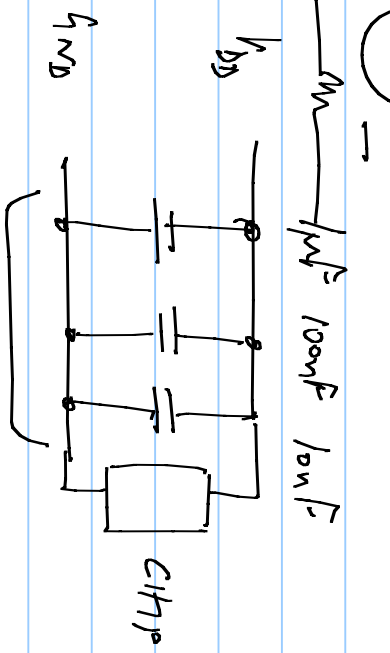
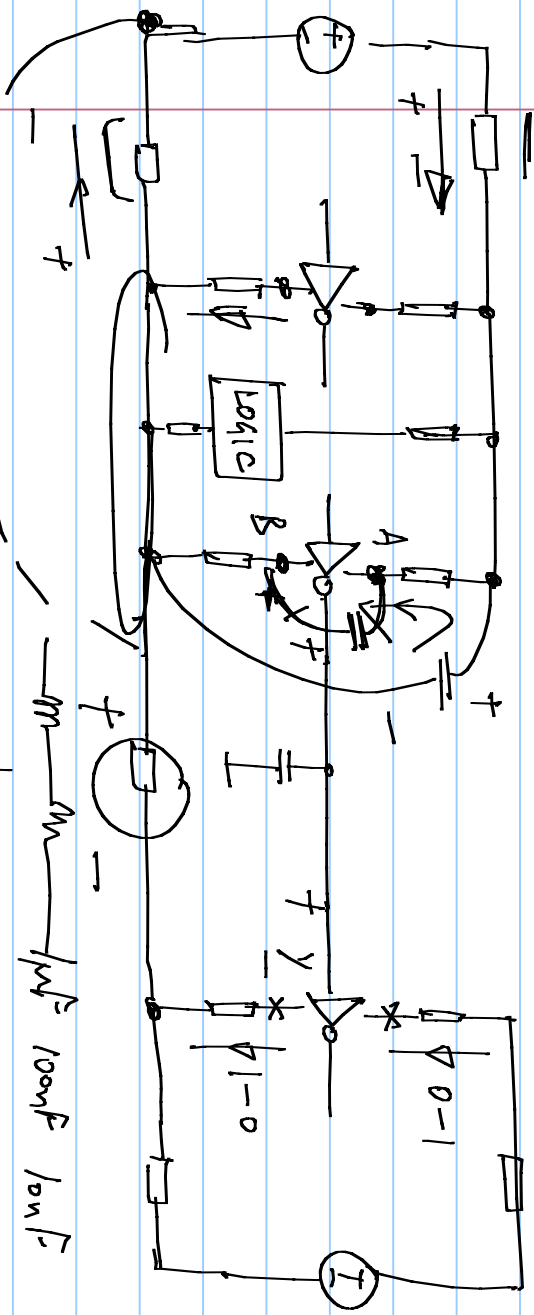
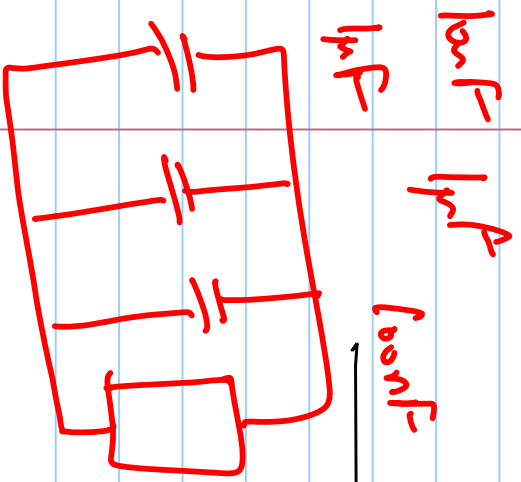
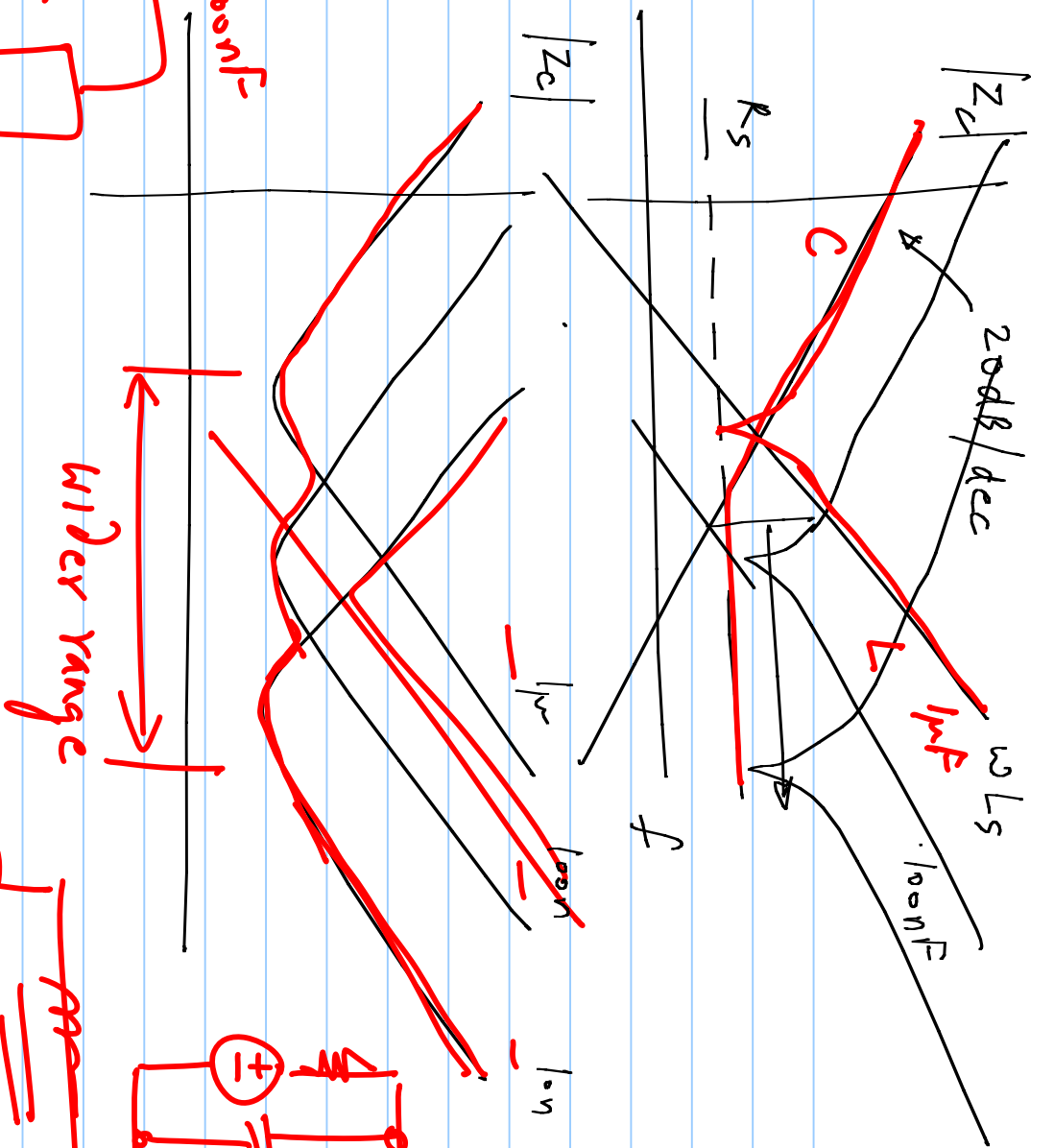
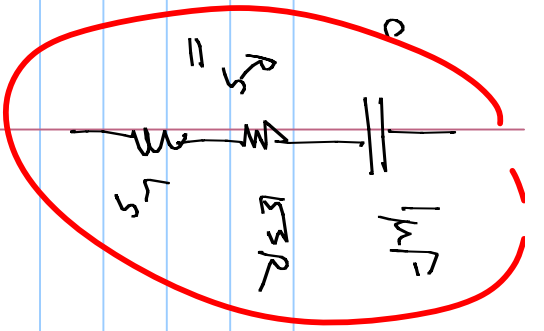


1) Fluctuation on V_{D_s} & GND lines

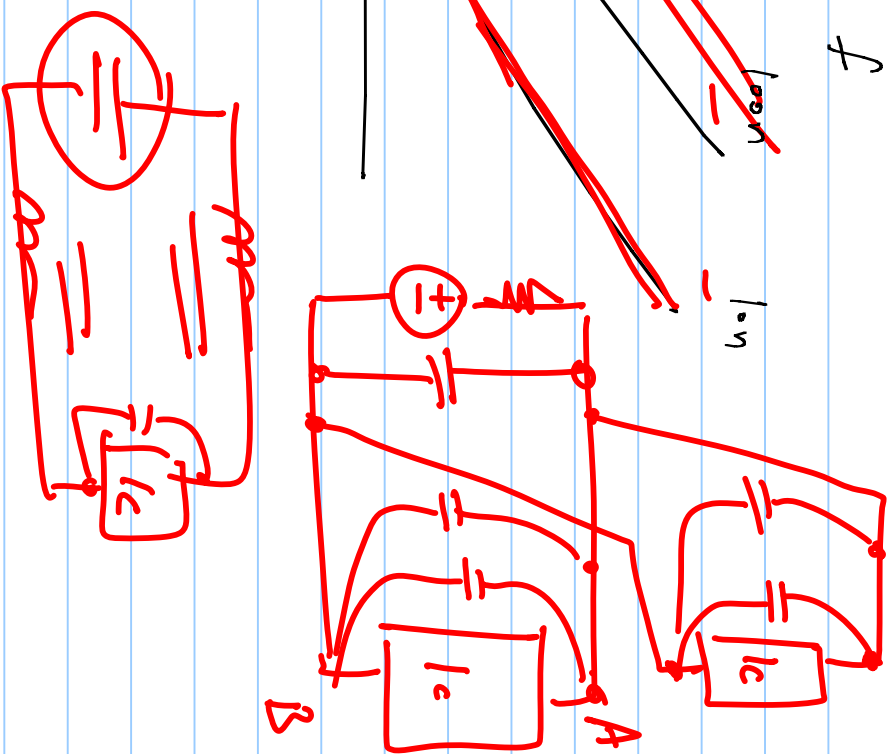


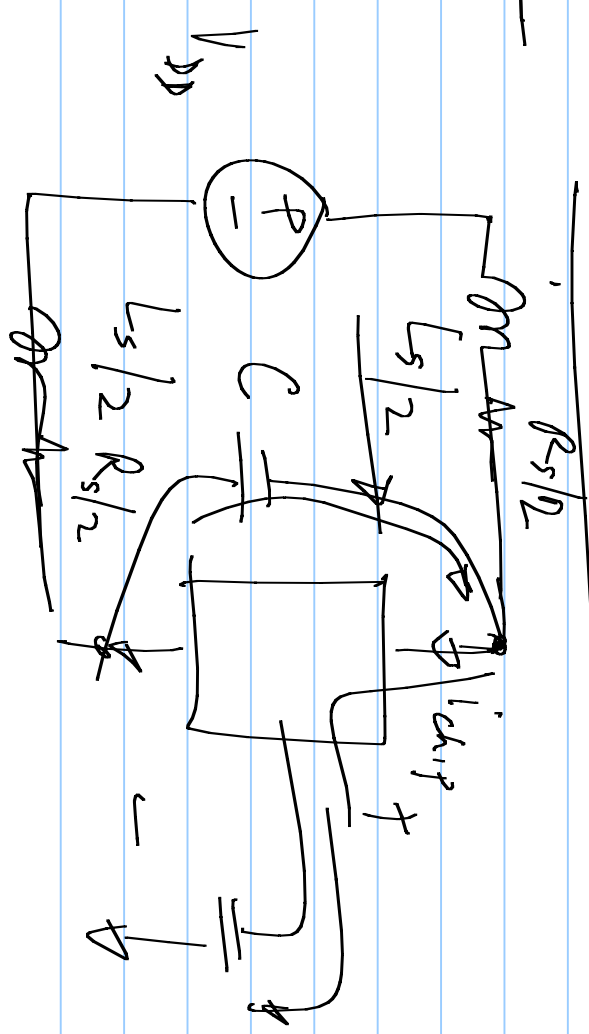
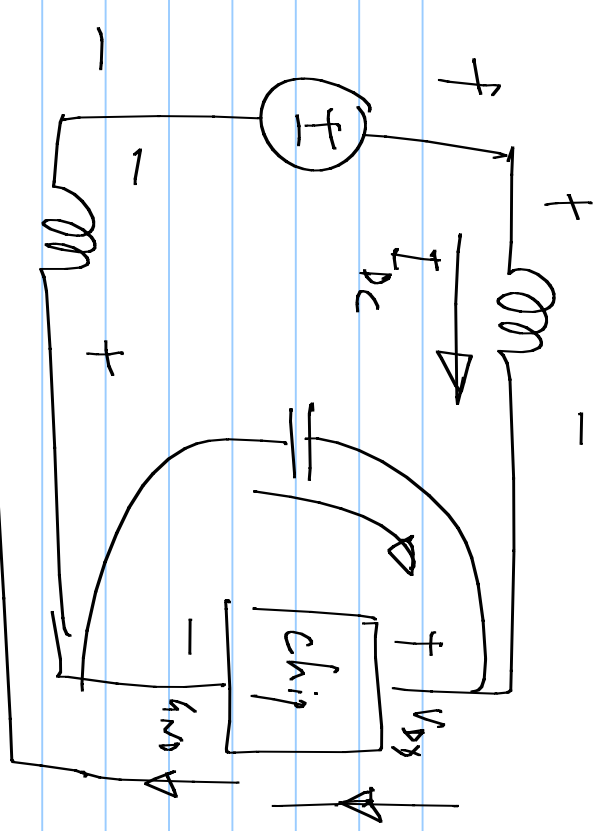
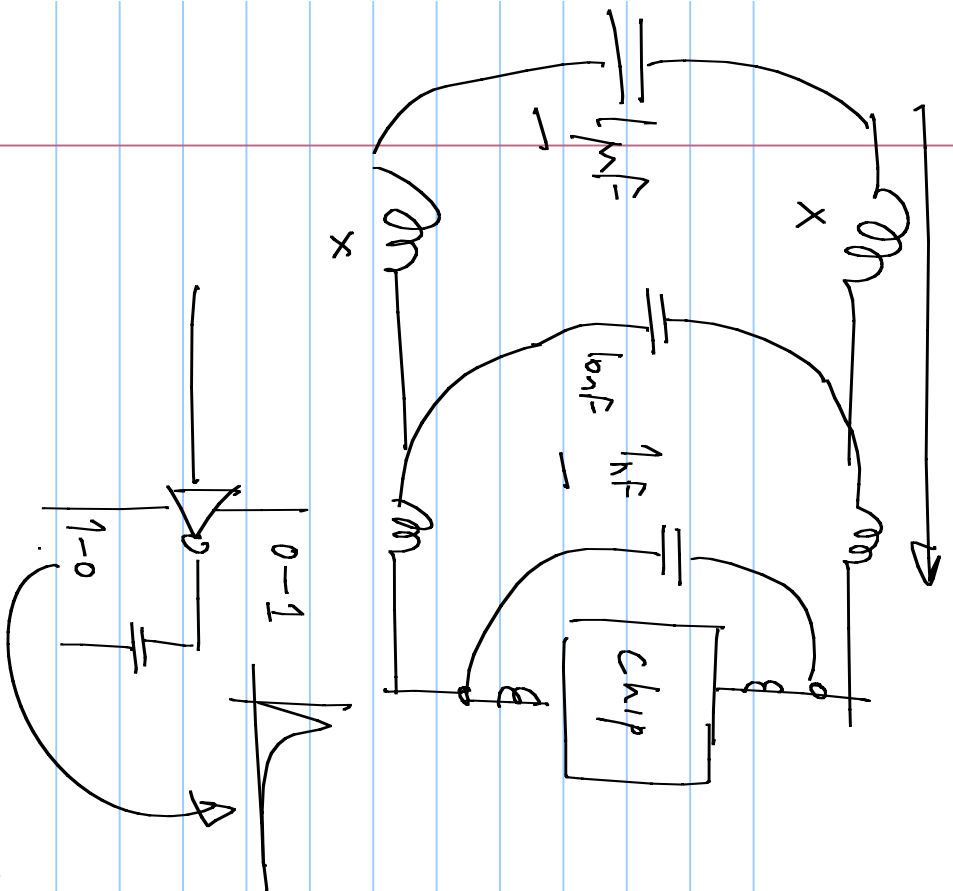
2) V_{D_s}

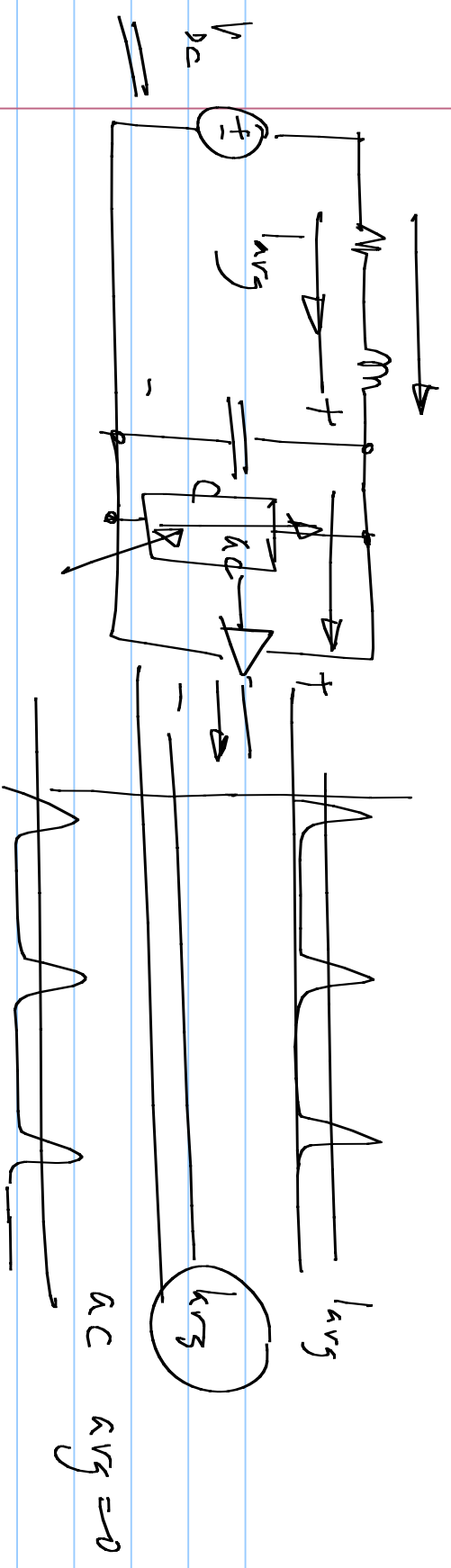


Wider range

$1\mu F, 100\text{ nF}$

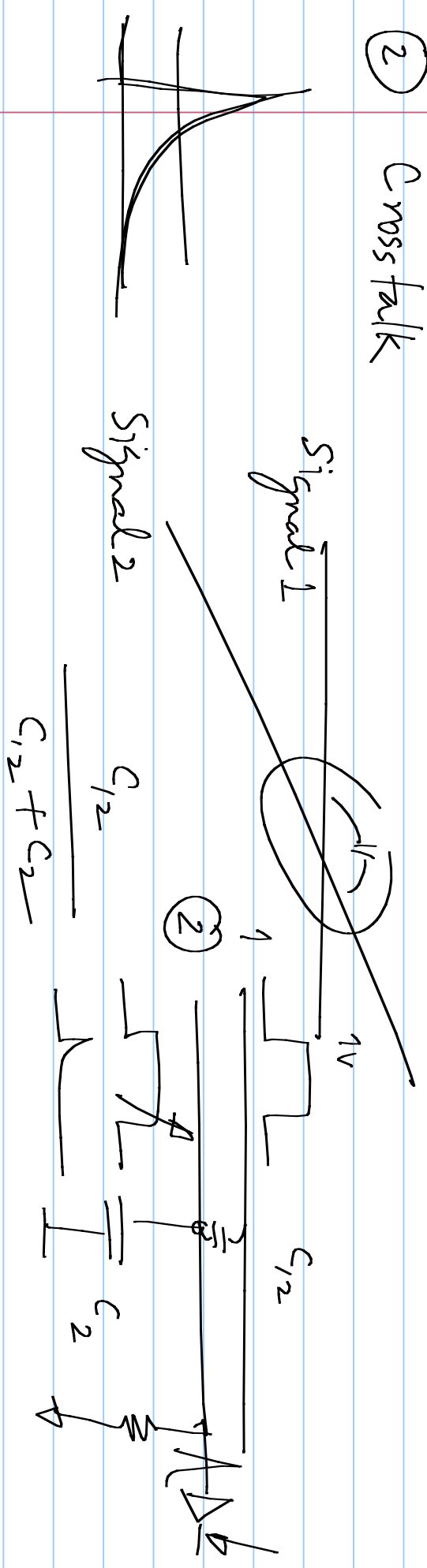


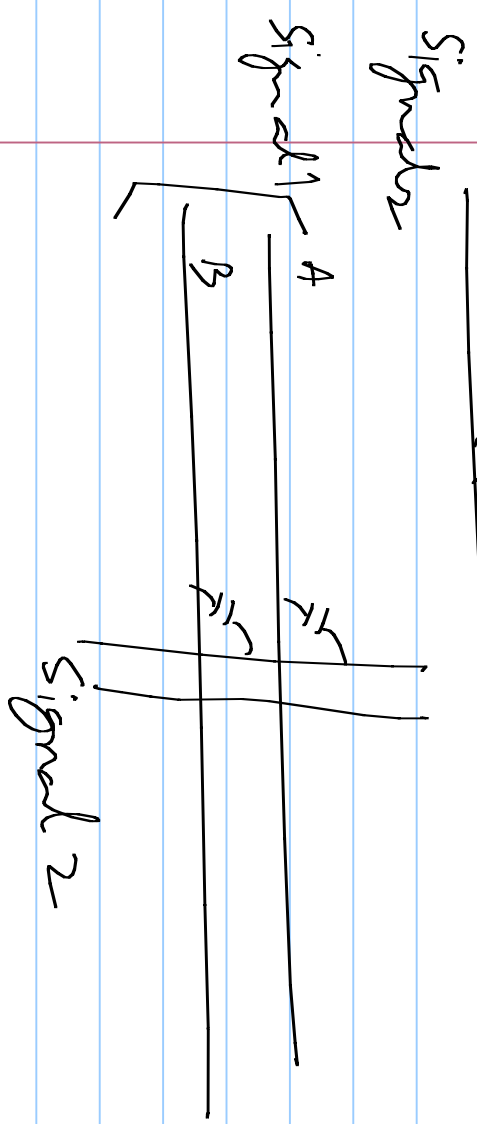
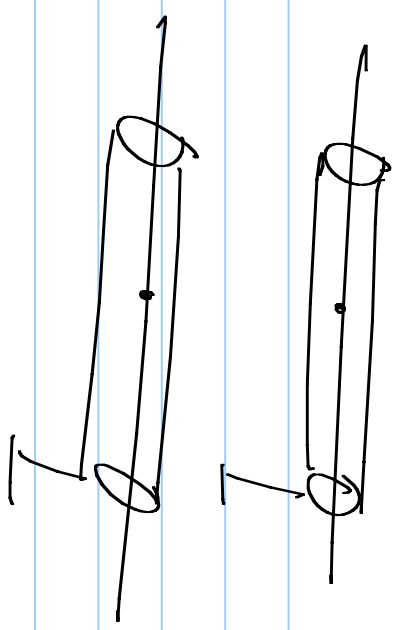
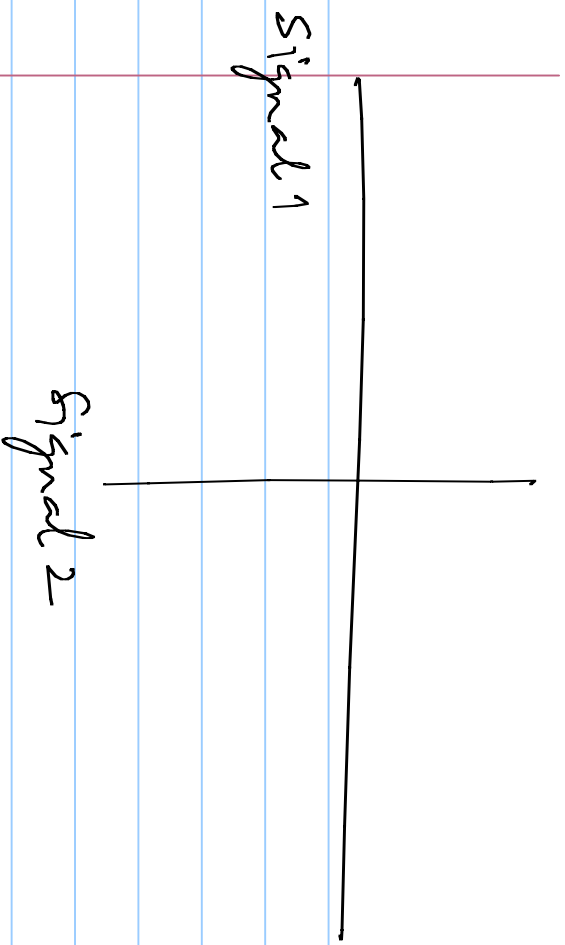




① "Noise" on V_{DD} & GND terminals

② Crosstalk





$\text{Logic 0: } V_{AB} = -0.5V$
 $\text{Logic 1: } V_{AB} = +0.5V$

