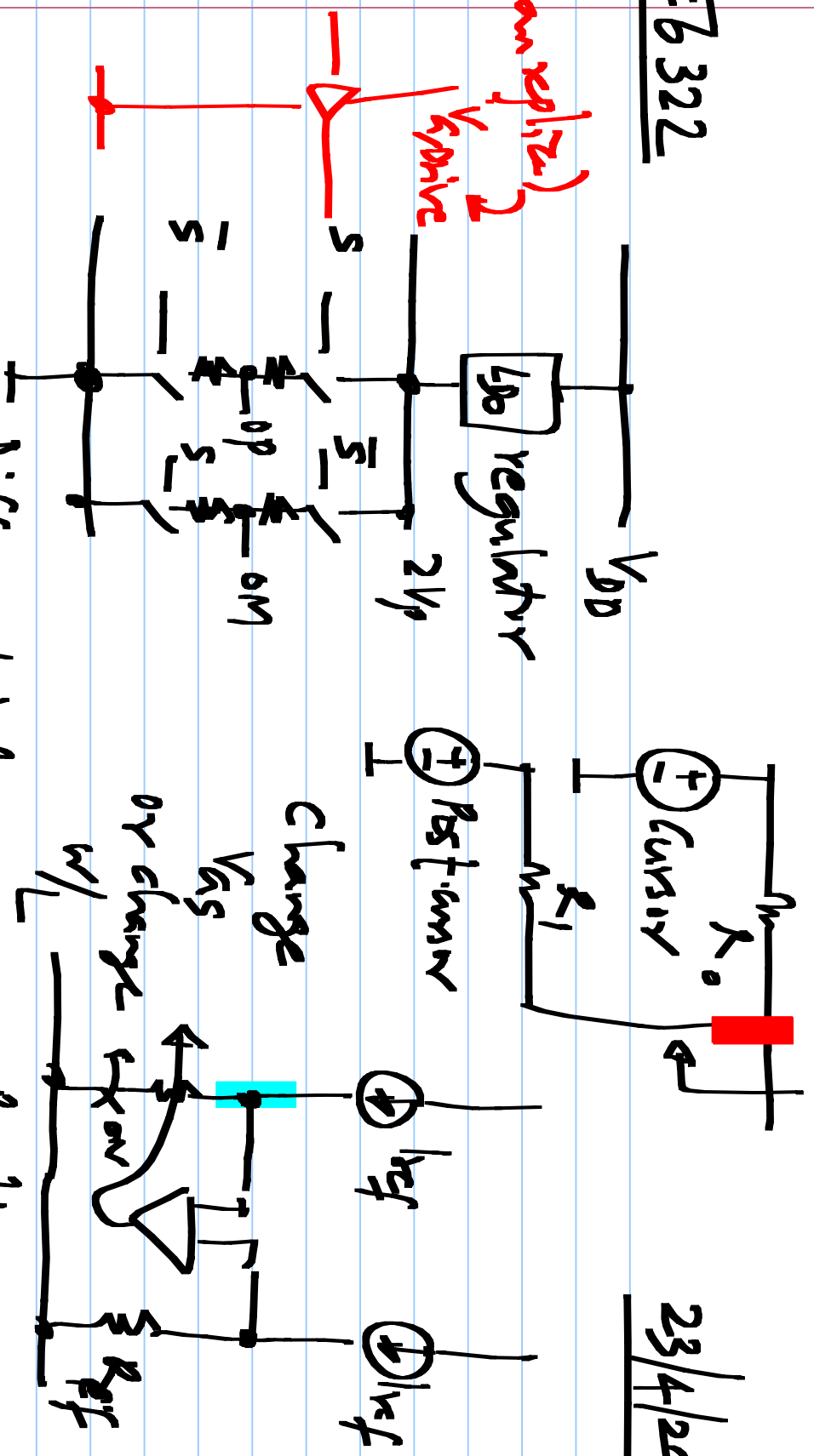


EEB 322

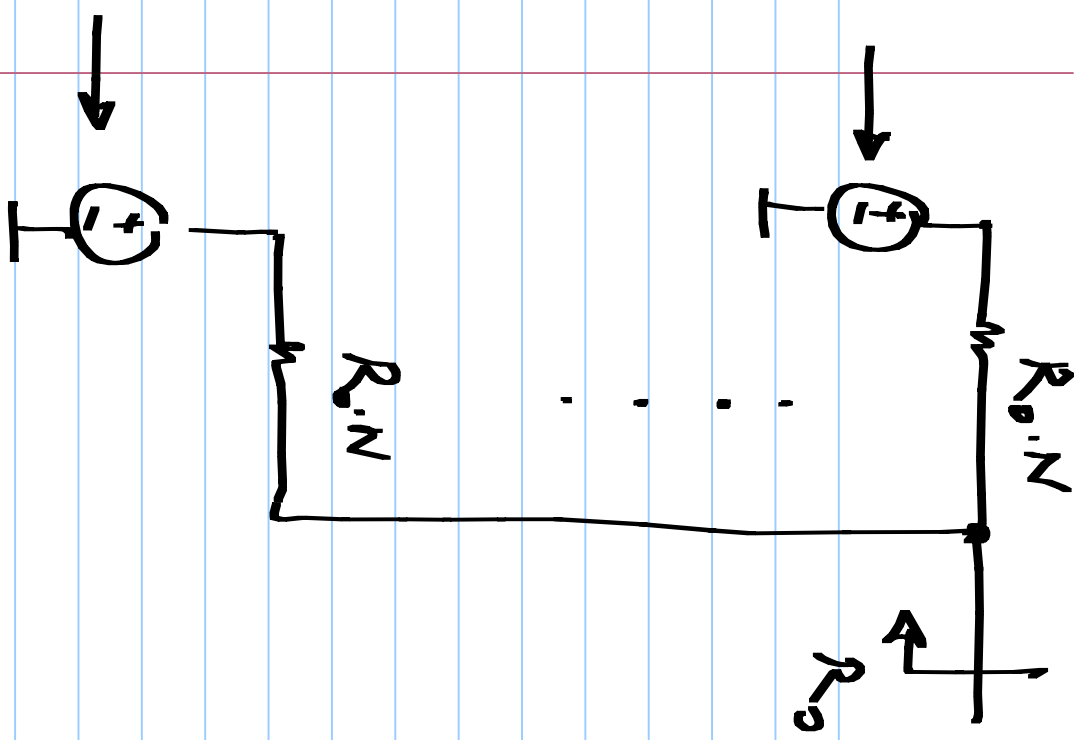
23/4/2018

(from replica)



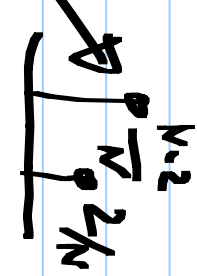
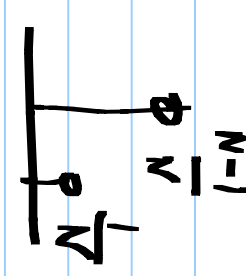
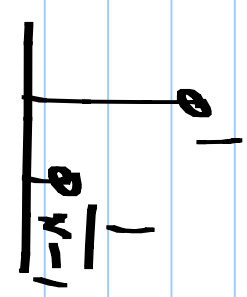
Differential mode
voltage mode transmitter

switch TR : MOS



Current Part: current

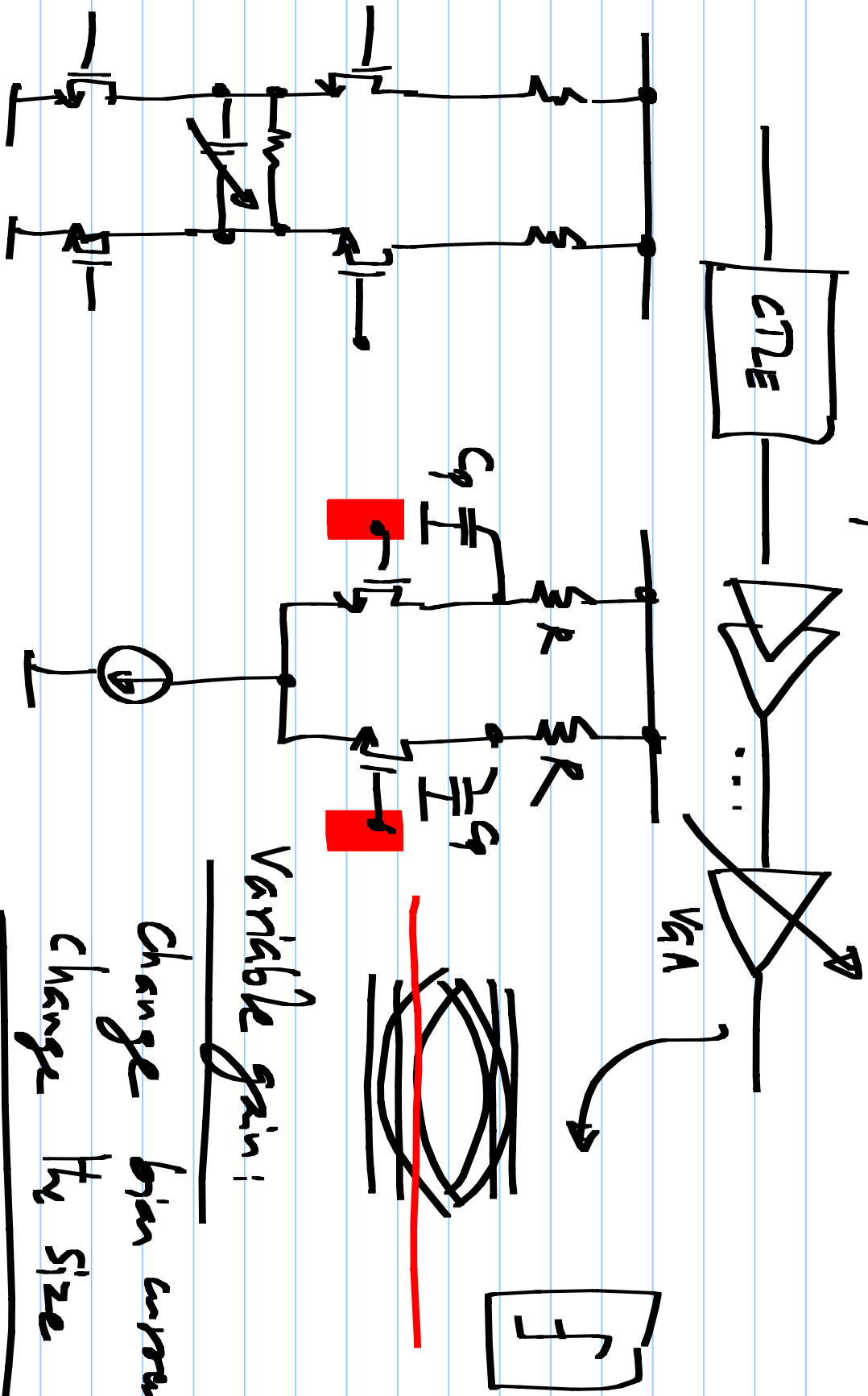
$N-1$ | 2



Current decreases as
resistance increases

Ex 1:

Linear operation if I_{E1} is required.

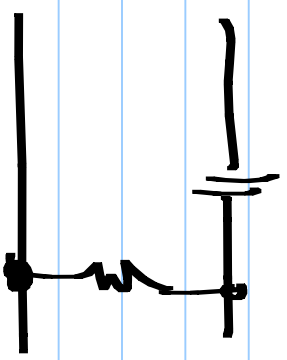
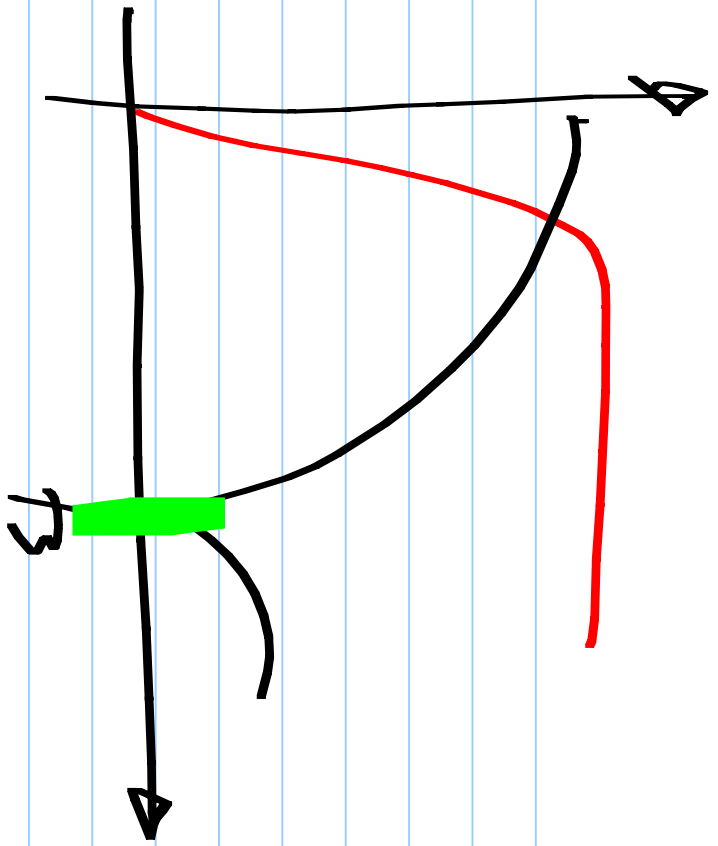


Variable gain:

change bias current-
change I_{E1} size

Run-length limited coding

8B/10B coding, 64/6B coding



CID (consecutive identical digits)

