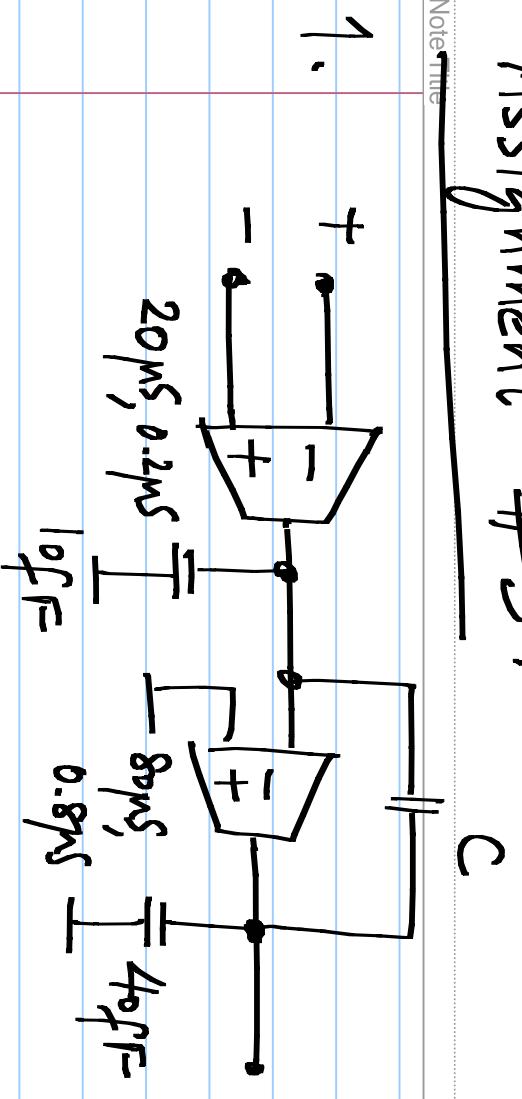
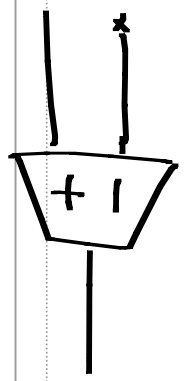


Assignment #3:

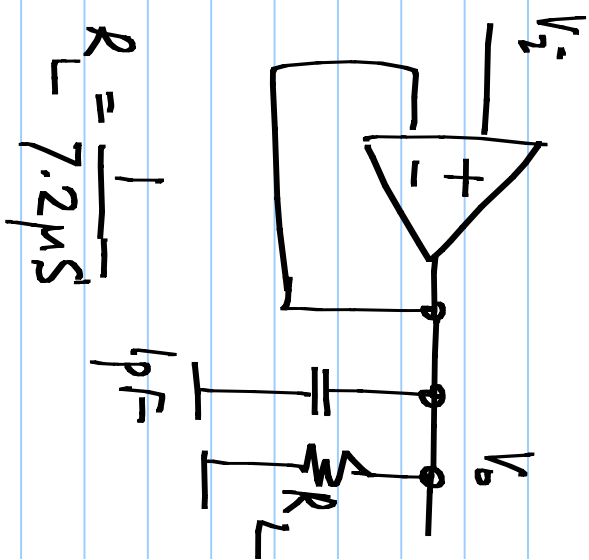


TWO STAGE OPAMP

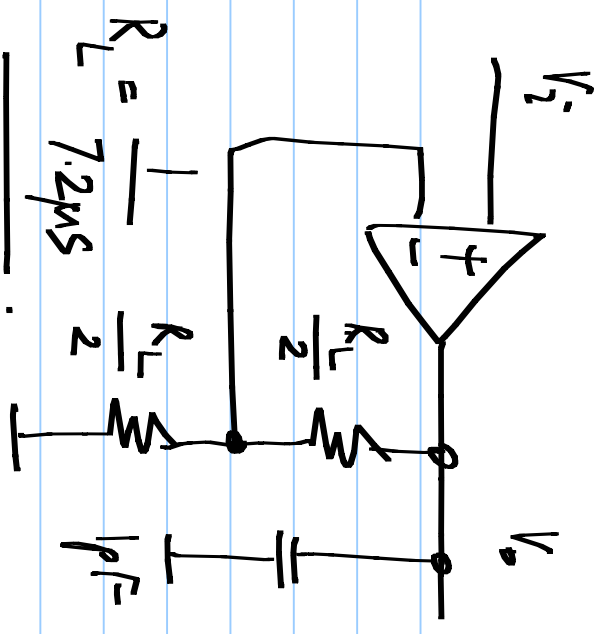
The two stage opamp above is used in the unity gain follower on the right. What is the highest closed loop BW you can obtain with a 60° phase margin in the loop?



G_m, G_o
 Transconductance
 Output conductance

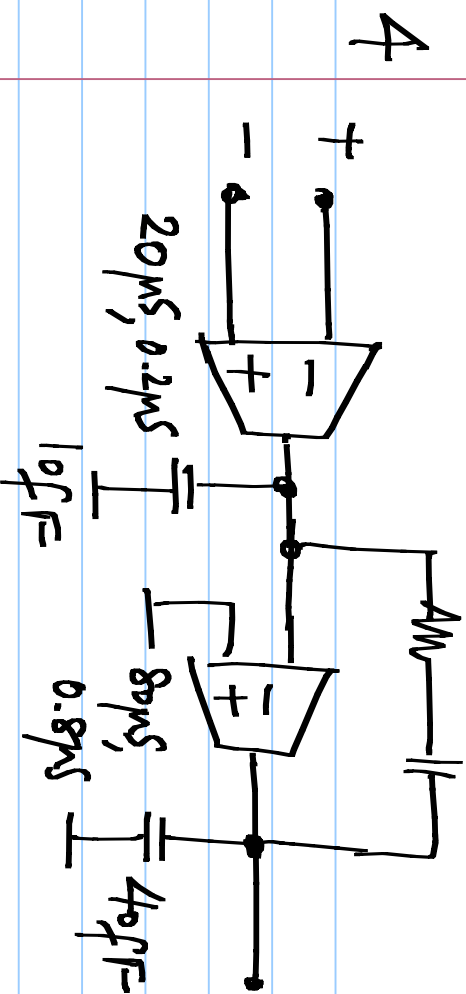


2. The two stage opamp above is used in the 2x amplifier on the right. What is the highest closed loop BW you can obtain with a 60° phase margin in the loop?



3. Comment on the bandwidths you can obtain for unity gain & 2x gain amplifiers.

12.5k Ω C



A zero cancelling resistor is used in series with the integrating capacitor. Repeat prob #1 for this case.

5. Repeat prob #2 with the opamp above