

# EE539: Analog Integrated Circuit Design

Nagendra Krishnapura (nagendra@iitm.ac.in)

14/3/06

## **SWITCHED CAPACITOR.**

Average current =  $\frac{CV_T}{T_s}$

$$R_{eq} = \frac{T_s}{C}$$

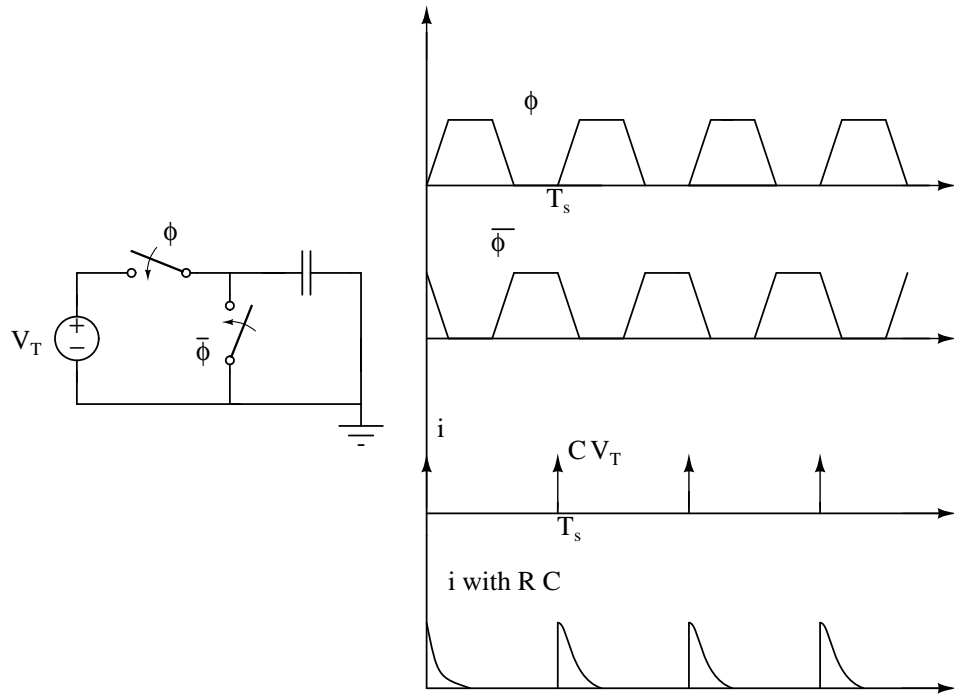


Figure 1: SWITCHED CAPACITOR

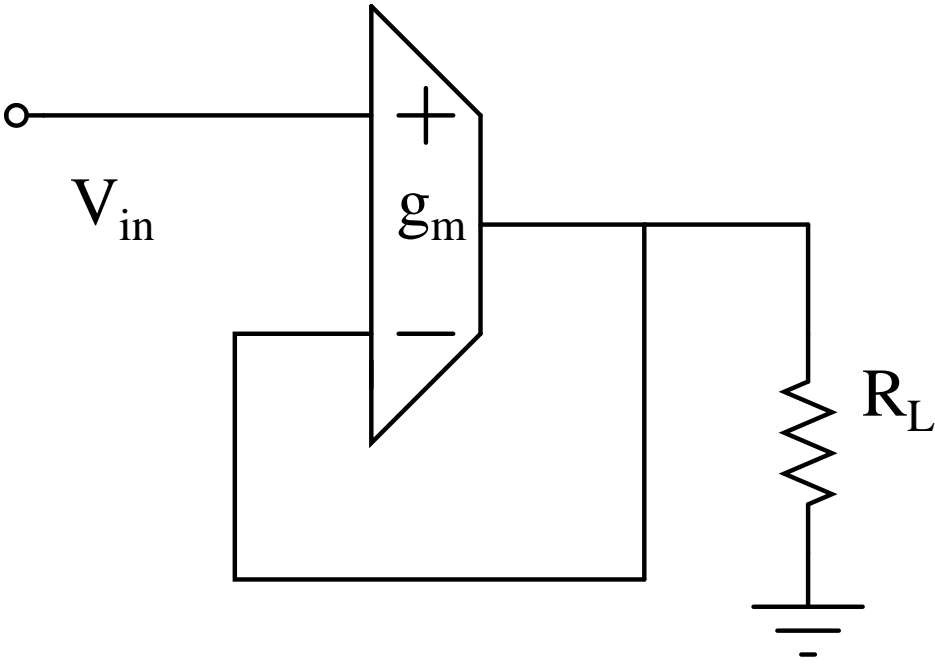


Figure 2: USING RESISTOR

$$G(s) = g_m(R_o // R_L) \quad (1)$$

$$H(s) = 1 \quad (2)$$

$$G_c(s) = \frac{G(s)}{1 + G(s)H(s)} \quad (3)$$

$$\frac{V_o(s)}{V_{in}(s)} = \frac{1}{1 + \frac{1}{g_m(R_o // R_L)}} \quad (4)$$

$$idealgain = 1 \quad (5)$$

$$E(s) = \frac{1}{1 + \frac{1}{g_m(R_o // R_L)}} \quad (6)$$

$$E(s) \approx \frac{1}{g_m(R_o // R_L)} \quad (7)$$

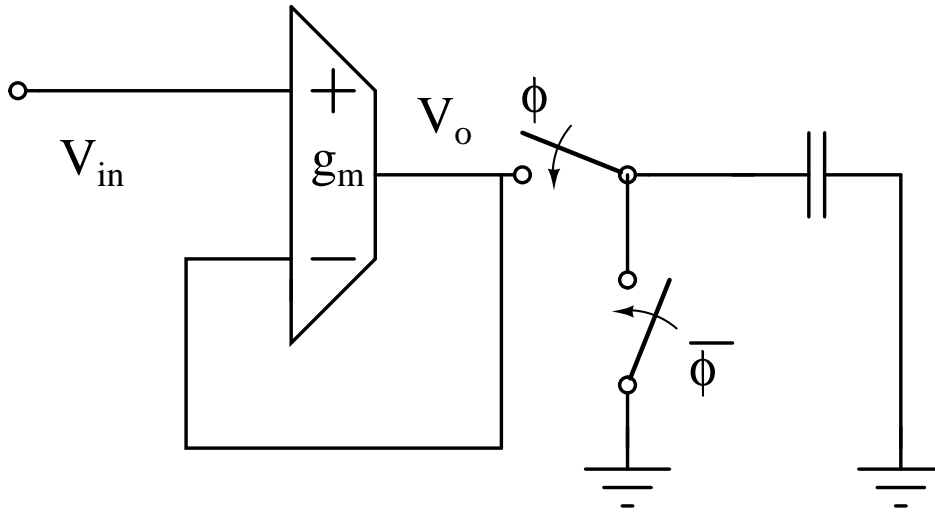


Figure 3: SWITCHED CAPACITOR

Replacing the switched capacitor with an equivalent resistor

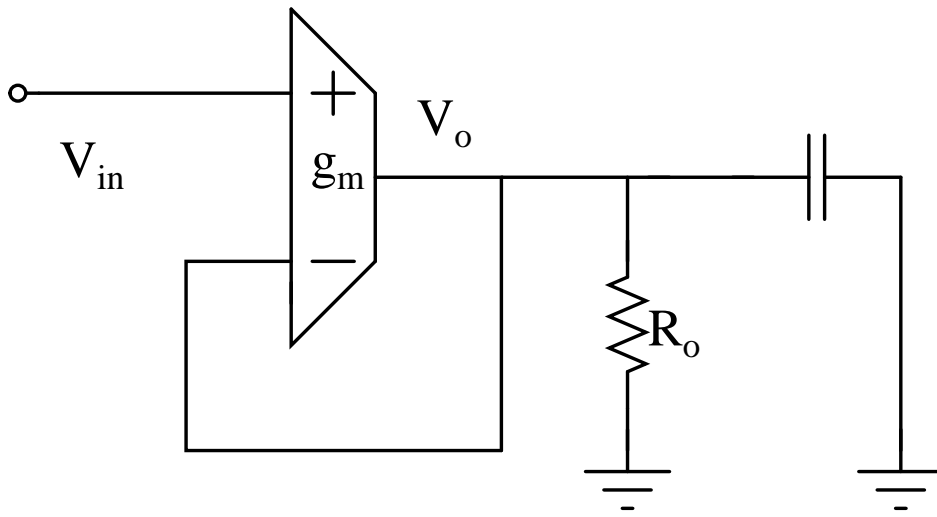


Figure 4: SWITCHED CAPACITOR

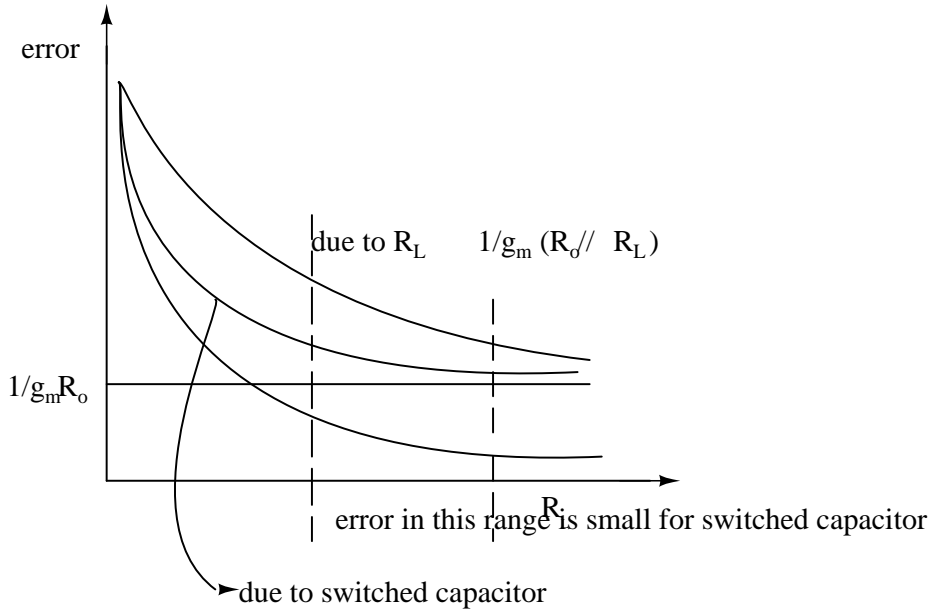


Figure 5: SWITCHED CAPACITOR

$$(V_{in} - V_o)g_m = V_o G_o + C V_o' \quad (8)$$

$$V_i \frac{g_m}{C} = V_o \frac{(g_m + G_o)}{C} + V_o' \quad (9)$$

$$\text{finally } V_o' = 0 \quad (10)$$

$$\text{Therefore } V_i \frac{g_m}{C} = V_o \frac{g_m + G_o}{C} \quad (11)$$

$$V_o = V_i \left( \frac{g_m}{g_m + G_o} \right) \quad (12)$$

$$\text{Time constant } \tau = \frac{C}{g_m + G_o} \quad (13)$$

$$V_o(t) = V_{final} + (V_{final} - V_{initial}) \left( 1 - \exp\left(-\frac{t}{\tau}\right) \right) \quad (14)$$

$$V_o(t) = \frac{g_m}{g_m + G_o} \left( 1 - \exp\left(-\frac{(g_m + G_o)t}{C}\right) \right) V_i \quad (15)$$

$$\frac{V_o\left(\frac{T_s}{2}\right)}{V_i} = \frac{g_m}{g_m + G_o} \left( 1 - \exp\left(-\frac{(g_m + G_o)\frac{T_s}{2}}{C}\right) \right) \quad (16)$$

$$\text{error} = \frac{1}{g_m R_o} + \exp\left(-\frac{(g_m + G_o)\frac{T_s}{2}}{C}\right) \quad (17)$$

The first part is the error due to transconductance of the opamp and second part due to switched capacitor