

EE5390 Analog Integrated Circuit Design

Assignment 7

Friday 26/04/2013

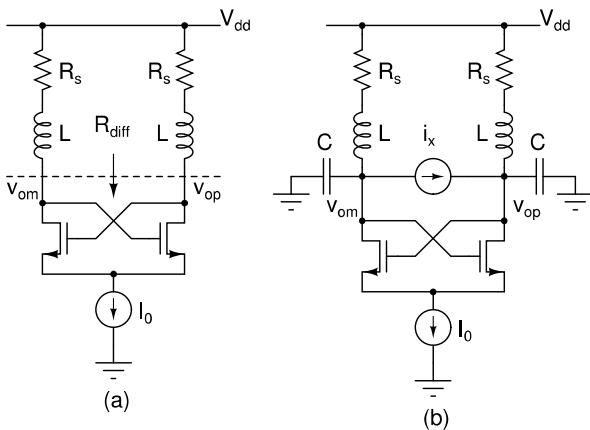


Figure 1:

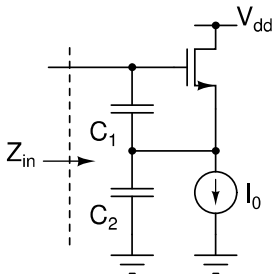


Figure 2:

1. Calculate the current flowing in each transistor in Fig. 1(a) in the quiescent condition. Calculate the small signal differential resistance R_{out} looking into the drains of the two transistors.

In Fig. 1(b), calculate $(v_{op} - v_{om})/i_x$. What is the condition for this to be infinity? What is the frequency at which this happens?

2. Calculate the input impedance Z_{in} in Fig. 2. Is there anything special about it? Model the transistor using only its g_m .

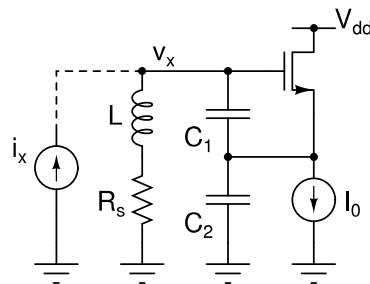


Figure 3:

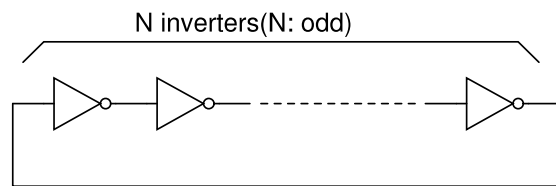


Figure 4:

3. Calculate the small signal impedance v_x/i_x . What is the condition for this to be infinity? What is the frequency at which this happens? Model the transistor using only its g_m .
4. In Fig. 4, assume that all nodes are at the self bias voltage of the inverter. Model the small signal gain of each inverter as $A_0/(1 + s/p_1)$ and calculate the condition for instability (i.e. when the loop gain becomes -1). Hint: Among the roots of -1 , pick the one which satisfies the above for the lowest value of A_0 .