

EECE 1010: Electrical and Magnetic Circuits.

Problem set #4 (Due on 23 Mar. 2013)

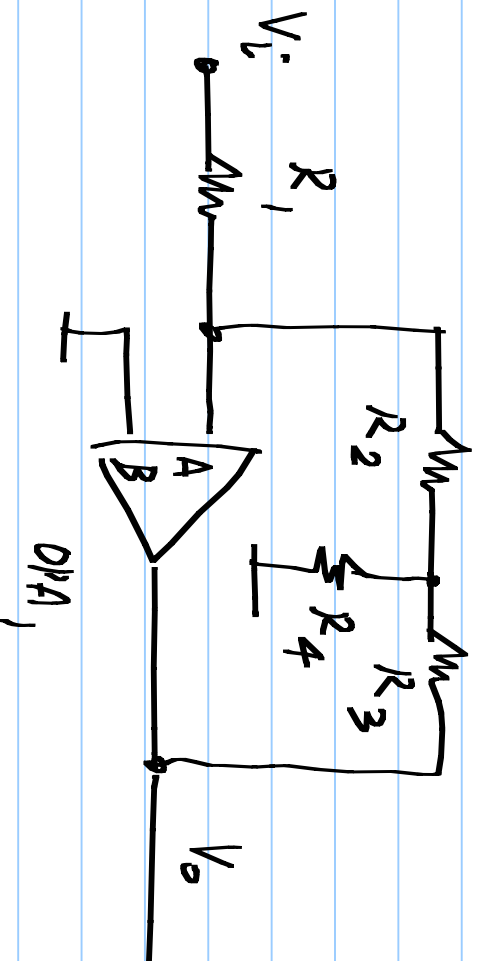
HKD: Hayt, Kemmerly, and Durbin

Engineering circuit analysis, 7th Edition

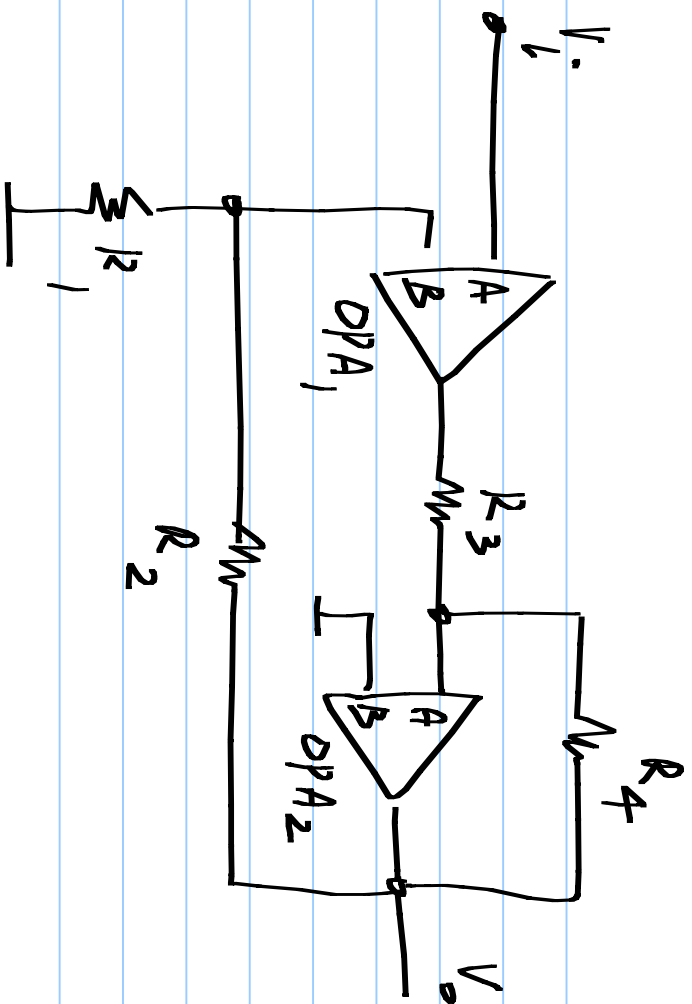
Tata McGraw Hill 2010, 2006

P 1-4: Determine the output sign for negative feedback and calculate V_o/V_i or V_o/I_i .

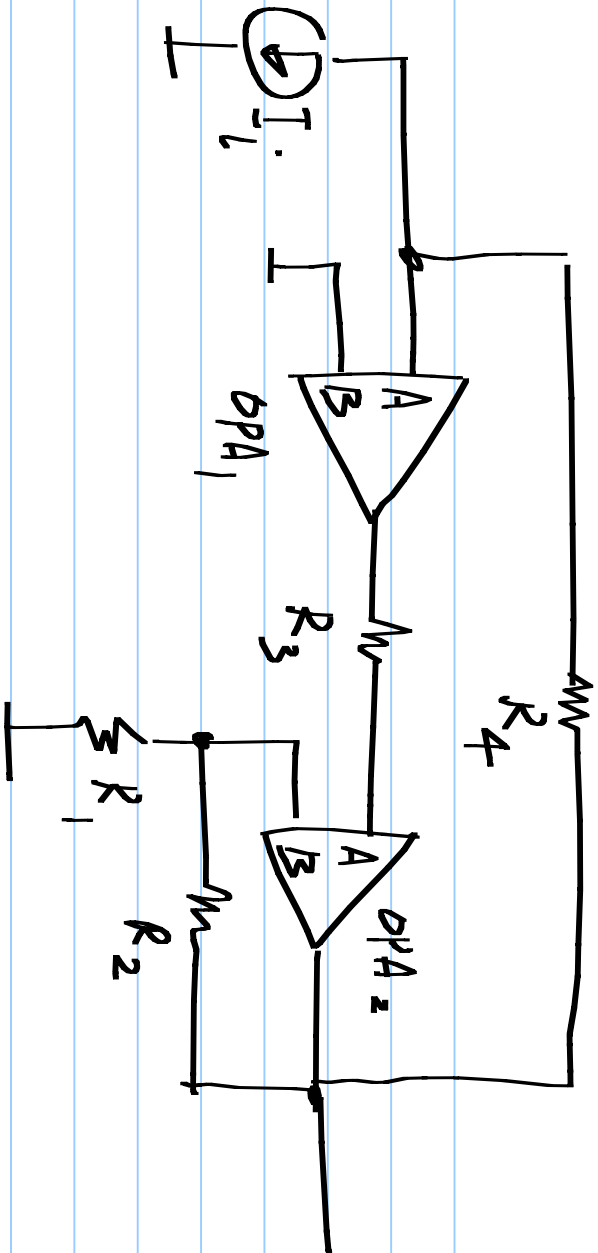
P1.



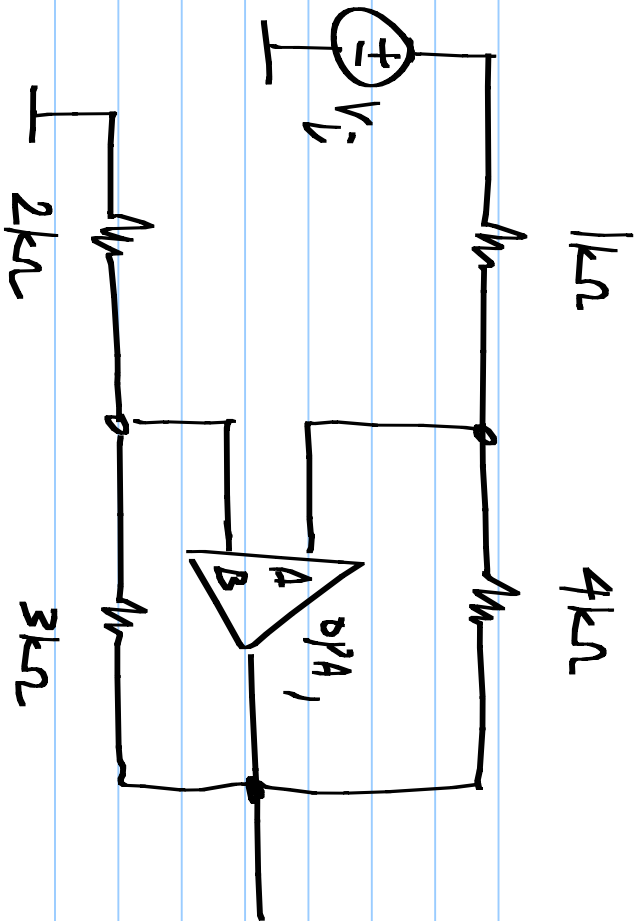
P2.



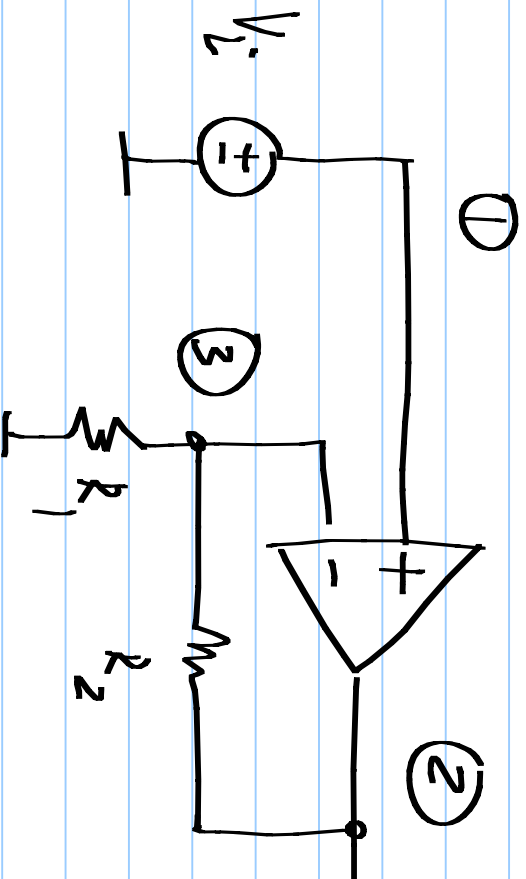
P3.

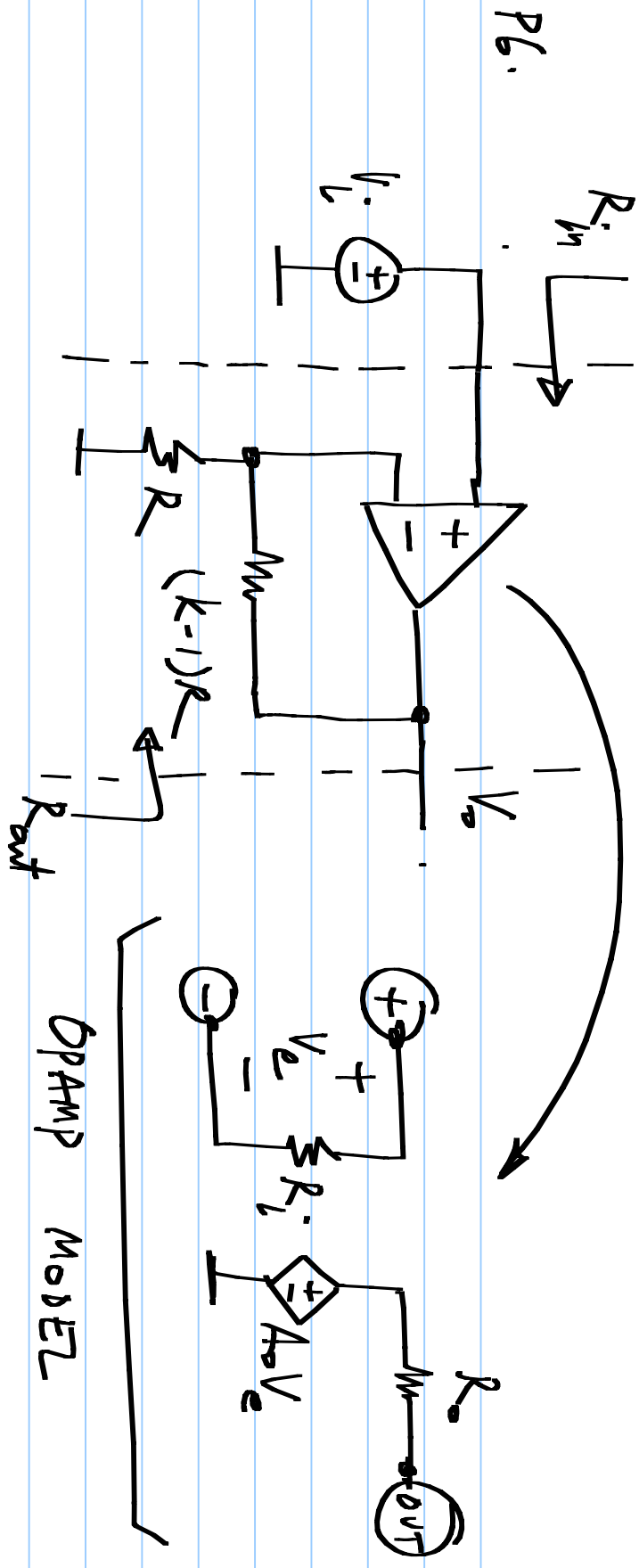


P4:



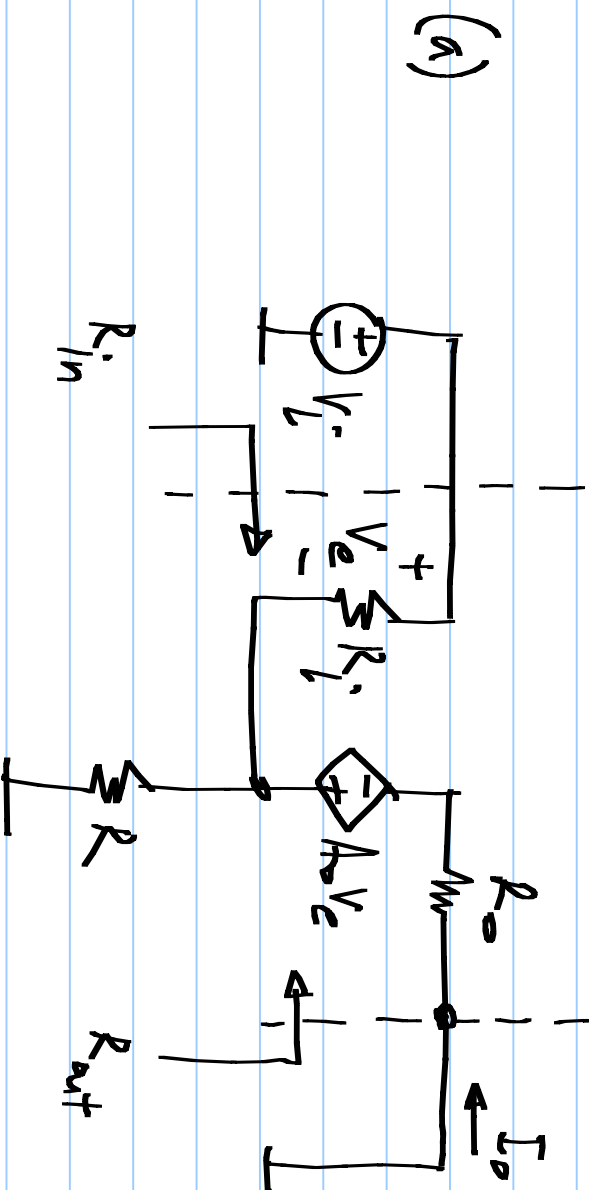
Q5. Write the modified nodal analysis equations for the following circuit-



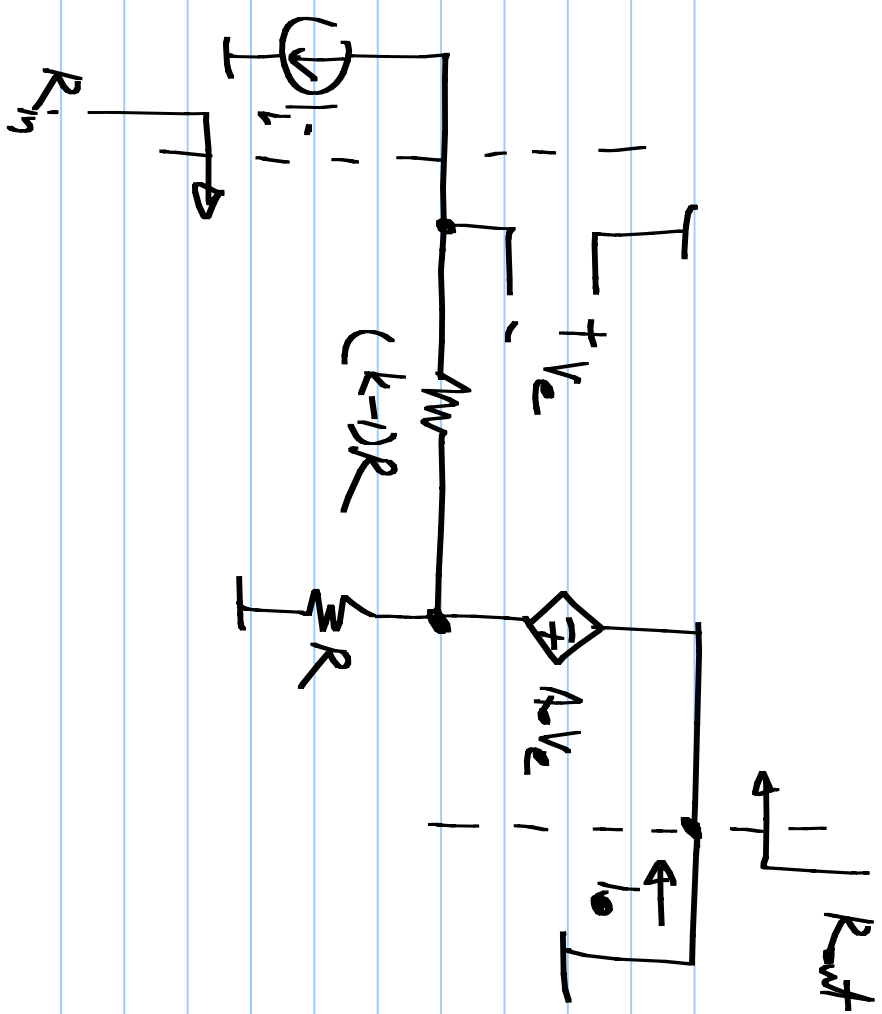


Determine V_o/V_i , R_{in} , R_{out} with the given
 opamp model.

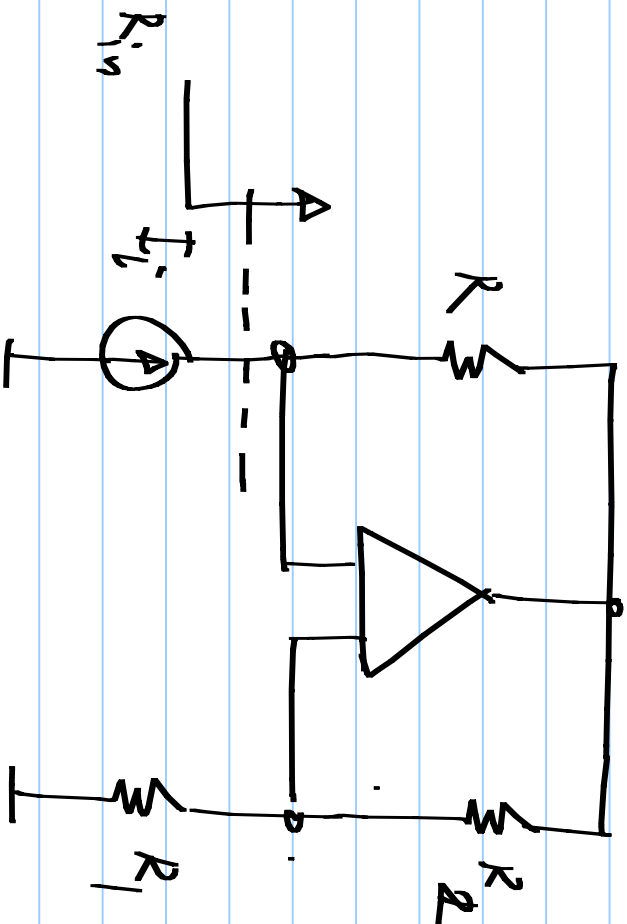
P7. Determine the output/input ratio, and the input and output resistances in the following circuits.
 What happens as $A_v \rightarrow \infty$



(b)



P8.



Determine the
opamp sign for
negative feedback.
Determine R_{in} , the
resistance seen by
the current source.